



**Fort Tuthill County Park \\ Flagstaff, AZ \\ May 19-21, 2023**

## **MOTO WEEKEND PASS WITH CAMPING ATTENDEES**

### **THANK YOU FOR JOINING US AT OVERLAND EXPO WEST!**

Our team at Overland Expo is thrilled for another year of making unforgettable memories with you! Please review our expectations and guidelines in the interest of meeting and exceeding our mutual goals. We are stoked to see you soon-the event countdown has begun!

### **CHECK-IN HOURS:**

- Thursday, May 18th (8:00 AM – 6:00 PM)
- Friday, May 19th (8:00 AM – 6:00 PM)
- Saturday, May 20th (8:00 AM – 5:00 PM)
- Sunday, May 21st (8:00 AM – 10:00 AM)

**YOU MUST ARRIVE WITHIN THE DESIGNATED CHECK-IN HOURS-NO EXCEPTIONS!**

### **OVERLAND EXPO WEST EVENT CHECKLIST:**

#### **ARRIVAL**

- Your QR code is your ticket! Please have your QR code (print / digital) ready for a smooth check in process.
- Please REVIEW and SIGN the general liability waiver located in your ticket confirmation email; this is required before your arrival onsite.
- For a quick staging process, follow the set of directions below:
  - FROM S. BEULAH BLVD / 89A, TURN ONTO PURPLE SAGE TRAIL.
  - FROM PURPLE SAGE, TURN LEFT ONTO INFANTRY RD & FOLLOW DIRECTIONAL SIGNAGE TO WEEKEND PASS WITH CAMPING CHECK-IN
  - Do **NOT** enter at the main Fort Tuthill County Park entrance
- Upon entering the path, proceed to the staging lanes. Overland Expo Staff will verify your Weekend Pass with Camping Registration, scan your QR code, and guide you to your campsite.
  - **NOTE:** After being placed within your campground, please walk over to the GRANDSTAND building next to the track to collect your REQUIRED credentials for the weekend (Camping Sticker & Wristband)
  - If you need to leave your campsite/venue to return at a later time, you **MUST** keep your Camping Sticker visible at all times.
  - Your wristband **MUST** be worn at all times for access to the moto campgrounds and event. We will not provide replacements.

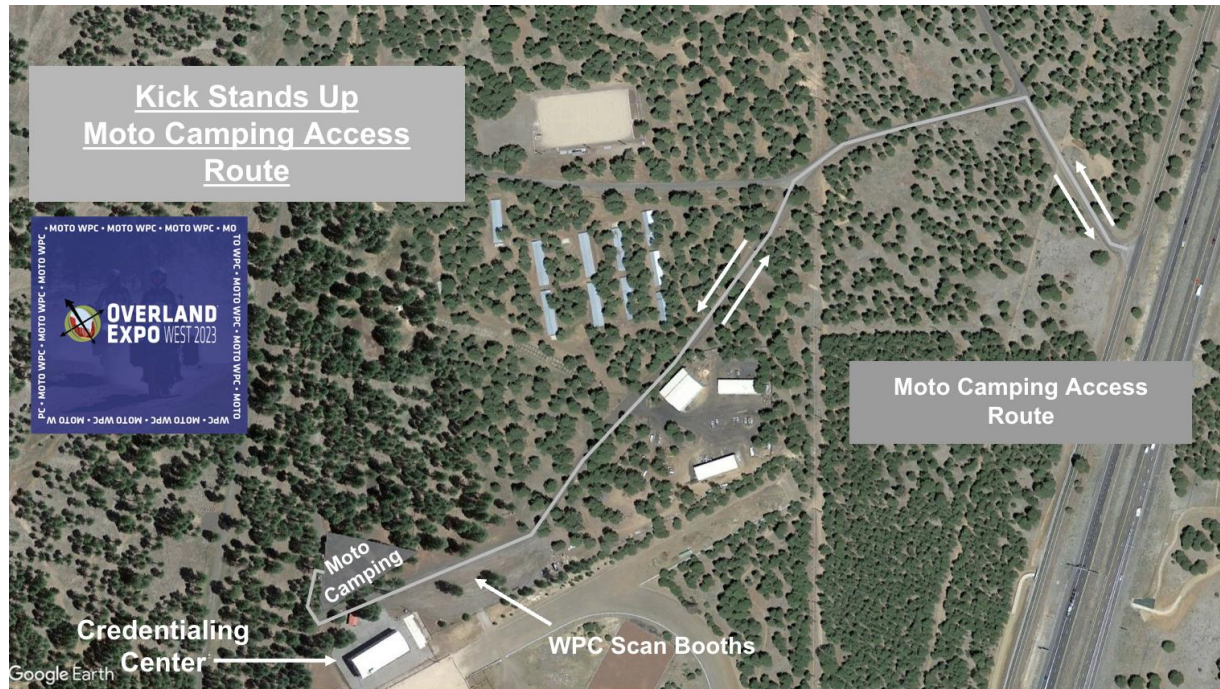
## REMINDERS

- All moto campers will be placed in their own designated section.
- All campsites are on a first-come, first-serve basis. If choosing to camp with another party, then you must arrive together. NO saving space. Please be understanding and patient during camping placement as Staff will assist all campers into the designated spaces. Although Fort Tuthill is a gorgeously wooded area, it can be hard to fit all campers in a desirable spot.
- It is festival-style camping: you will be in close proximity to your neighbor.
- Geyser Shower Systems are available in the stable camping area.
- Potable water will be limited to filling water bottles **only**.
- Quiet Hours begin at 10pm, please be respectful of your neighbor
- If ADA camping accommodations have been requested, please present your ADA placard and a Camp Host will place you accordingly.
- Check out for the Moto Campgrounds is 11 AM on Monday, May 22, 2023

## PLAN AHEAD

- Download the [Overland Expo App](#) Powered by Timberline Heating. Choose the 2023 WEST Event. Log in with your unique email used within your ticket registration. The app will provide a venue map that will guide you to exhibitors, food vendors, and the general class schedule. Create your account PRIOR to arriving at the event.
- Check out our general [FAQ](#) for more information on campground amenities, rules, kids, dogs, media usage, vehicle restrictions, and MORE!
- For event specifics, check out our [WEST FAQ](#).
- Please review our [SHOW UPDATES](#) for the newest map, schedules, exhibitor lists, and final announcements.
- Interested in upgrading your pass? In need of adding on additional passengers or merchandise to your order? [CONTACT US](#) for further assistance!

## OVERLAND EXPO WEST MOTO WEEKEND PASS WITH CAMPING ARRIVAL MAP



Kick Stands Up  
Moto Camping Access  
Route



Moto Camping Access  
Route

Moto  
Camping

Credentialing  
Center

WPC Scan Booths

Google Earth