



OAK RIDGE ESTATE | ARRINGTON, VA | OCTOBER 6-8, 2023

MEDIA PASS ATTENDEES

THANK YOU FOR JOINING US AT OVERLAND EXPO EAST!

Our team at Overland Expo is thrilled for another year of making unforgettable memories with you! Please review our expectations and guidelines in the interest of meeting and exceeding our mutual goals. We are stoked to see you soon-the event countdown has begun!

MEDIA CHECK-IN HOURS:

- Thursday, October 5th (8:00 AM – 6:00 PM)
- Friday, October 6th (8:00 AM – 6:00 PM)
- Saturday, October 7th (8:00 AM – 5:00 PM)

YOU MUST ARRIVE WITHIN THE DESIGNATED CHECK-IN HOURS-NO EXCEPTIONS!

(If you arrival before or after these hours, then you will be staged in the lanes to camp overnight until check-in opens the following morning.)

ARRIVAL

- Your QR code is your ticket! All tickets from the same order are linked. Please have your QR code (print / digital) ready to ensure a smooth check-in process. State your check-in as a “Media Passholder” so that you will be directed to the correct area.
- Please REVIEW and SIGN the general liability waiver located in your ticket confirmation email; this is required before your arrival onsite.
- Follow the set of directions below:
 - Enter the Main Entrance at **GATE 5** from **Oak Ridge Road** and follow signage / traffic personnel to the assigned entry gate & parking location.
- Upon entering the venue, Overland Expo Staff will direct you to the left staging area for Media check-in.

- If camping on-site, you will temporarily park in this lot until you receive all of your credentials, then follow guidance from the camping attendants.
- If staying off-site, you may proceed to park in the day pass parking lot near the event entrance.
- Once you have parked, proceed to the Attendee Check In entrance. Head to the check in tent and your Media ticket will be scanned.
 - You will receive swag bag, and show materials, such as our Overland Newsletter, an event map, and daily schedules.
- If camping on-site, camp hosts will be available to place you in your appropriate campsite location.
 - If you need to leave your campsite/venue to return at a later time, you **MUST** keep your Camping Hang Tag displayed at all times.
 - Your Media Badge **MUST** be worn at all times for access to the Media Room, campgrounds, and the event. We will not provide replacements.

REMINDERS

- All campsites are on a first-come, first-serve basis. NO saving space.
- Please be understanding during camping placement as Staff will assist all campers into the designated spaces. It is festival-style camping: you will be in close proximity to your neighbor.
- Only Overland style campers are allowed. If exceeding 13' please [CONTACT US](#).
- Geyser Shower Systems will be available for all onsite camping from the hours of 6am – 10am and 5pm - 9pm
- Be sure to fill your water tanks prior to arrival, as potable water will be limited to filling water bottles **only**.
- If ADA camping accommodations have been requested, please present your ADA placard and a Camp Host will place you accordingly.
- Quiet Hours begin at 10PM, please be respectful of your neighbor
- Check out for the Media Campgrounds in General Weekend Pass with Camping is 11 AM on Monday, October 9, 2023.
- There will be no overnight parking permitted in the day pass parking lot.

MEDIA ROOM

- Media Passholders will have exclusive access to the Media Room. This room may be utilized for content production, a place to hold your gear, and as a charging station.
- Lunch will be provided on Friday and Saturday around noon.
- **MUST** present your Media credentials for lunch and Media Room access.
- The Media Room is located behind the Show Office and can be accessed upon entering through the front main event entrance nearby shuttle drop off/pick up in the day pass parking lot. As you enter the event, it is the second tent to your left.

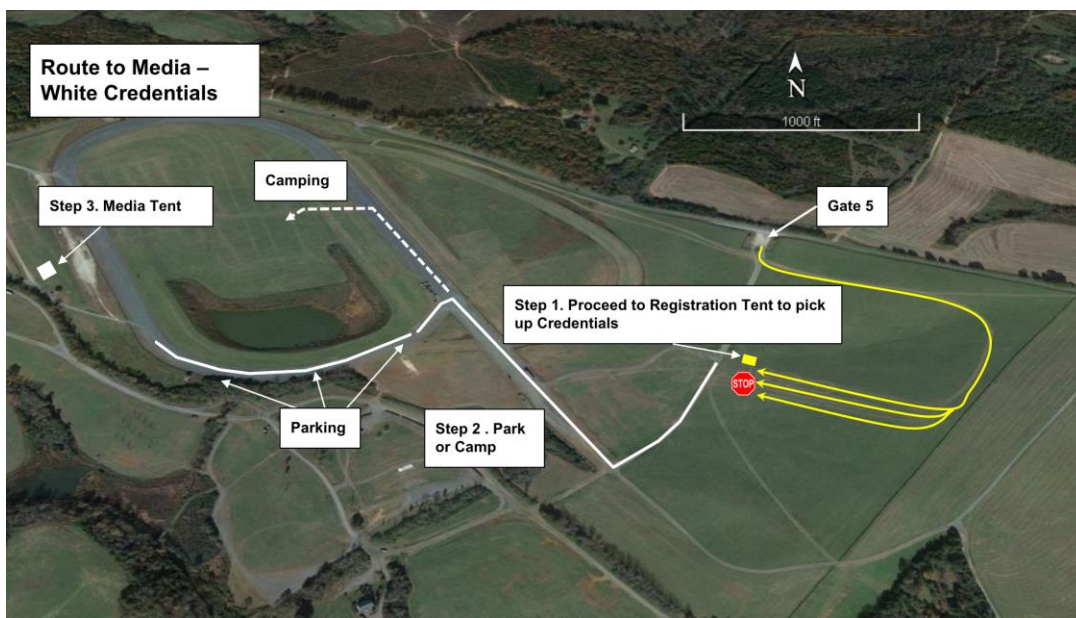
PLAN AHEAD

- Download the [Overland Expo App](#). Choose the 2023 Overland Expo EAST Event. Log in with your unique email used within your ticket registration. The app will provide a

venue map that will guide you to exhibitors, food vendors, and the general class schedule. Create your account PRIOR to arriving at the event.

- Check out our general [FAQ](#) for more information on campground amenities, rules, kids, dogs, media usage, vehicle restrictions, and MORE!
- For event specifics, check out our [EAST FAQ](#).
- Please review [SHOW UPDATES](#) for the newest map, schedules, exhibitor lists, and final announcements.
- In need of adding on merchandise or raffle tickets to your order? [CONTACT US](#) for further assistance!

OVERLAND EXPO EAST MEDIA PASS ARRIVAL MAP



Your Media Credential Details:

Media Pass provides the below access for one (1) Adult and one (1) Vehicle including:

- Weekend Pass admission to Overland Expo EAST October 6-8, 2023 at Oak Ridge Estate
- Plus, enjoy 120+ general activities: demos, roundtables, slideshows, and evening films;
- Shop the exhibitor midway;
- First drink free at Welcome Reception and Happy Hours;
- Badge, Goody bag + Sourcebook Magazine
- Exclusive access to the Media Room for lunch and content production.
- Complimentary Lunch (Friday/Saturday)

MEDIA CONTACT:

Director of Communications: **Jessica Kirchner**

jessica.kirchner@emeraldx.com | Cell: **317-716-2676**