



**OAK RIDGE ESTATE | ARRINGTON, VA | OCTOBER 6-8, 2023**

## **SHOWCASE & DIY ATTENDEES**

**THANK YOU FOR JOINING US AT OVERLAND EXPO EAST!**

Our team at Overland Expo is thrilled for another year of making unforgettable memories with you! Please review our expectations and guidelines in the interest of meeting and exceeding our mutual goals. We are stoked to see you soon-the event countdown has begun!

### **SHOWCASE/DIY CHECK-IN HOURS:**

- Thursday, October 5<sup>th</sup> (10:00 AM – 4:00 PM)

### **SHOWCASE/DIY MANDATORY MEETING:**

- Thursday, October 5<sup>th</sup> 5:00 PM @ Around the World Pavilion

**YOU MUST ARRIVE WITHIN THE DESIGNATED CHECK-IN HOURS-NO EXCEPTIONS!**

**(If you arrive before or after these hours, then you will be staged in the lanes to camp overnight until check-in opens the following morning and/or until you can be placed.)**

## **ARRIVAL**

- Your QR code is your ticket! All tickets from the same order are linked. Please have your QR code (print / digital) ready to ensure a smooth check-in process. State your check-in as a "Showcase/DIY" so that you will be directed to the correct area.
- Please REVIEW and SIGN the general liability waiver located in your ticket confirmation email; this is required before your arrival onsite.
- Follow the set of directions below:
  - Enter the Main Entrance of Overland Expo via **GATE 5** from **Oak Ridge Road** and follow signage / traffic personnel to the assigned entry gate & check in location

- Upon entering the venue, Overland Expo Staff will direct you to the Attendee Check In parking area for check-in.
  - For Showcase/DIY camping, you will temporarily park in this lot until you receive all of your credentials.
  - Send Azure a text message at this point so she can make her way to the entrance to guide you in: 941-260-6670 Please note your name with your message.
- Once you have parked, proceed to the check-in tent and your Showcase/DIY ticket will be scanned.
  - You will receive swag bag, and show materials, such as our Overland Newsletter, an event map, and daily schedules.
- After check-in, wait for Azure to meet you to show you to your campsite.
  - Your Showcase/DIY Badge **MUST** be worn at all times for access to the campgrounds and event. We will not provide replacements.

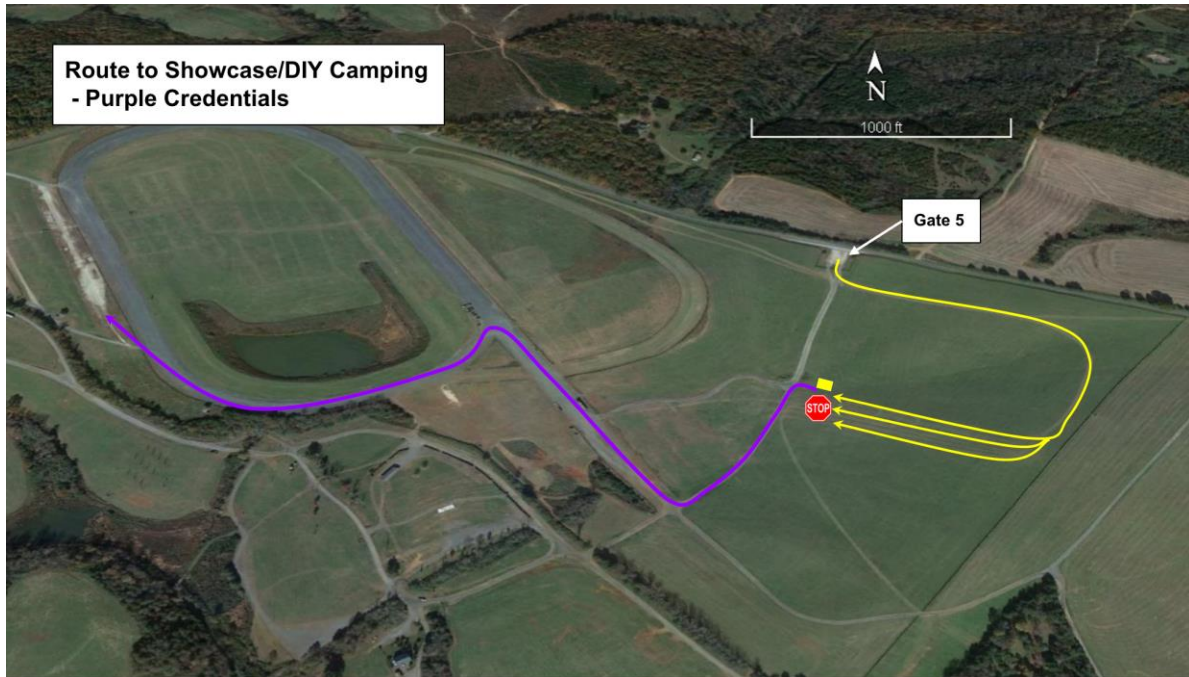
## REMINDERS

- Please be understanding during camping placement as Staff will assist all campers into the designated spaces. It is festival-style camping: you will be in close proximity to your neighbor.
- Geyser Shower Systems will be available for all onsite camping. Shower Hours are 6am – 10am and 5pm – 9pm.
- Be sure to fill your water tanks prior to arrival, as potable water will be limited to filling water bottles **only**.
- Quiet Hours begin at 10PM, please be respectful of your neighbor
- Check out for the Showcase/DIY Campgrounds is 11 AM on Monday, October 9, 2023.
- You **MUST** stay for the duration of the event, until Sunday 3 pm.
- Forgot to add on merchandise, raffle tickets, or an additional guest to your order, please click [ADD ON NOW!](#)

## PLAN AHEAD

- Download the [Overland Expo App](#). Choose the 2023 Overland Expo East Event. Log in with your unique email used within your ticket registration. The app will provide a venue map that will guide you to exhibitors, food vendors, and the class schedule. Create your account PRIOR to arriving at the event.
- **You MUST Login using the email you registered for tickets with** to connect your app with your ticket/schedule - each ticket needs a unique email address to access the app. If this is not the email address you used when applying for the Showcase/DIY area, **please let Azure know** - again, so that there will not be any issues with accessing your schedule. We recommend downloading to your phone BEFORE arriving at the event.
- Check out our general [FAQ](#) for more information on campground amenities, rules, kids, dogs, media usage, vehicle restrictions, and MORE!
- For event specifics, check out our [EAST FAQ](#).
- Please review our [SHOW UPDATES](#) for the newest map, schedules, exhibitor lists, and final announcements.

## OVERLAND EXPO EAST DIY/SHOWCASE CAMPING ARRIVAL MAP



### Showcase/DIY Details:

The Showcase/DIY With Camping Package provides the below access for one (1) Adult and one (1) Vehicle including:

- Weekend Pass admission to Overland Expo EAST October 6-8, 2023;
- Oak Ridge Estate Special campsite within the exhibitor row Thurs – Mon;
- Plus, enjoy 120+ general activities: demos, roundtables, slideshows, and evening films;
- Shop the exhibitor midway;
- First drink free at Welcome Reception and Happy Hours;
- Badge, Goody bag + Sourcebook Magazine

## CONTACT INFO

Azure O'Neil  
[azure.oneil@emeraldx.com](mailto:azure.oneil@emeraldx.com)  
941-260-6670