



Fort Tuthill County Park \ \ Flagstaff, AZ \ \ May 17-19, 2024

DAY / WEEKEND PASS ATTENDEES – ONSITE FORT TUTHILL PARKING

THANK YOU FOR CHOOSING OVERLAND EXPO WEST AS YOUR NEXT ADVENTURE!

The entire Overland Expo Team cannot wait to celebrate our 15TH West event with you! Please familiarize yourself with these arrival instructions and other valuable information pertaining to your pass type and trip! See you by the campfire!

ONSITE PARKING CHECK-IN HOURS:

- Friday, May 17th (7:45 AM – 5:00 PM)
- Saturday, May 18th (7:45 AM – 5:00 PM)
- Sunday, May 19th (8:45 AM – 3:00 PM)

YOU MUST ARRIVE WITHIN THE ONSITE PARKING CHECK-IN HOURS-NO EXCEPTIONS!

DAY / WEEKEND PASS ATTENDEE GATE HOURS:

- Friday, May 17th (8:00 AM – 5:00 PM)
- Saturday, May 18th (8:00 AM – 5:00 PM)
- Sunday, May 19th (9:00 AM – 3:00 PM)

ARRIVAL

- Your QR code is your ticket! Please have your QR code (print / digital) ready for your on-site parking pass to ensure a smooth check-in process. State your check-in as a “Day/ Weekend Pass Attendee with On-site Parking” so that you will be directed to the correct area.
- Please REVIEW and SIGN the general liability waiver located in your ticket confirmation email; this is required before your arrival onsite.
- Follow the set of directions below:
 - FROM S. BEULAH BLVD / 89A, TURN ONTO PURPLE SAGE TRAIL.
 - FROM PURPLE SAGE, TURN LEFT ONTO INFANTRY RD & FOLLOW DIRECTIONAL SIGNAGE TO DAY PASS WITH ONSITE PARKING
 - Do **NOT** enter at the main Fort Tuthill County Park entrance
- Upon entering the path, proceed to the staging lanes. Overland Expo Staff will verify your Onsite Parking QR code and direct you to the Day Pass parking area on the horse racing track. Be prepared for dust, dirt, and possible mud on the track.
 - Onsite Parking is \$20/day and must be purchased online in advance. If you did not purchase Day Pass parking, then we will be unable to accommodate you for onsite parking. Please go to NAU for use of the free shuttle service that runs throughout the event weekend.
 - Once you have parked, proceed to the pathway towards the main event entrance. Your Day Pass ticket will be scanned and you will receive show materials, such as our Overland Newsletter, Sourcebook, an event map, and daily schedules.

REMINDERS

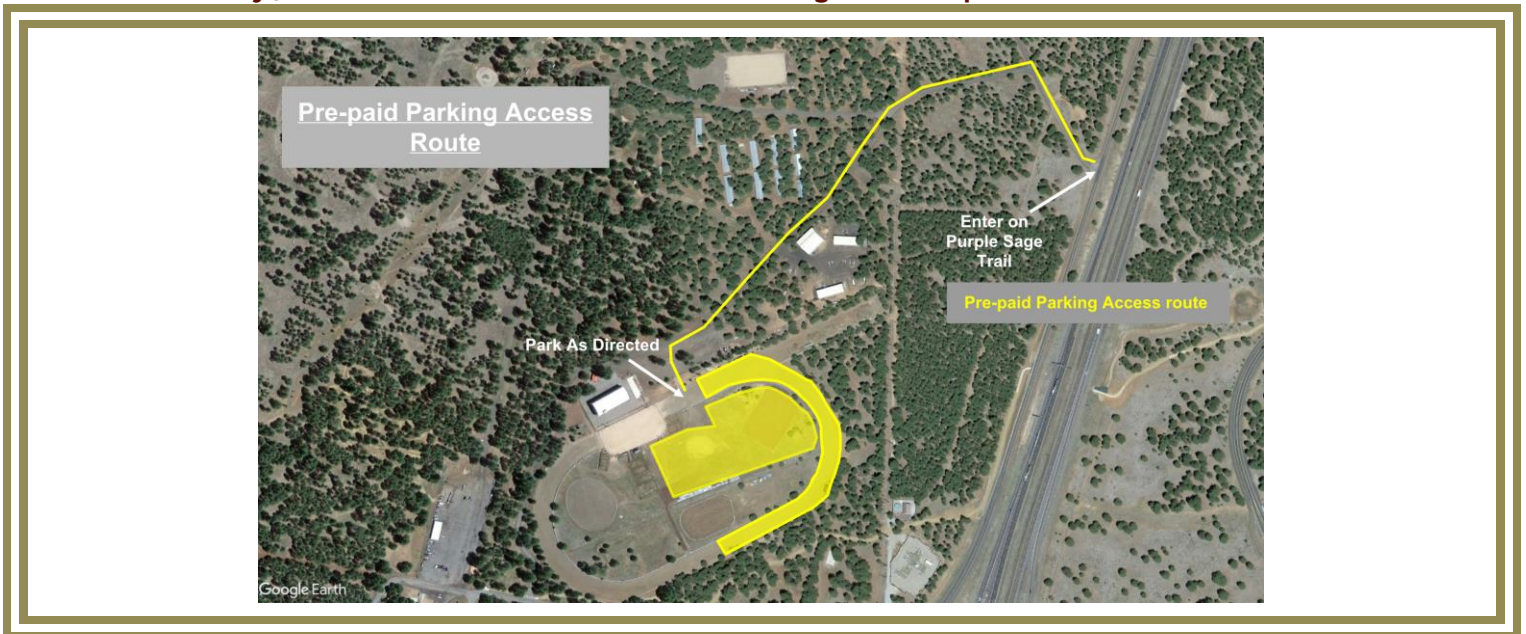
- If ADA parking accommodations have been requested, please present your ADA placard. Please bring along any personal wheelchairs or assisted devices, as needed.

- If arriving on a motorcycle, you **must** have purchased a parking pass and will be directed to a moto parking lot.
- Potable water will be available to fill water bottles only.
- Backpacks are permitted to bring necessities.
- No camping or Overnight Parking in Fort Tuthill Parking Lots.
- No grilling or open flames in the Parking Lots.
- Smoking (this includes e-cigarettes and vapes) is allowed in designated areas only.
- Well-behaved and leashed dogs are welcome at Overland Expo.

PLAN AHEAD

- Download the [Official Overland Expo App](#) Powered by [Mercedes-Benz of Northern Arizona](#). Choose the 2024 WEST Event. Log in with your unique email used within your ticket registration. The app will provide a venue map that will guide you to exhibitors, food vendors, and the general class schedule. Create your account PRIOR to arriving at the event.
- Check out our general [FAQ](#) for more information on venue rules, parking, kids, dogs, media usage, and MORE!
- For event specifics, check out our [WEST FAQ](#).
- Please review our [SHOW UPDATES](#) for the newest map, schedules, exhibitor lists, and final announcements.
- Interested in upgrading your pass? In need of adding on Overland Expo Foundation raffle tickets, Moto Dinner Party tickets, merchandise, or an additional guest to your order? [CONTACT US](#) for further assistance!

Day / Weekend Pass Fort Tuthill On-Site Parking Arrival Map



THANK YOU AGAIN FOR JOINING US & CHEERS TO ANOTHER GREAT OVERLAND EXPO WEST!

~ THE OVERLAND EXPO TEAM ~