



Fort Tuthill County Park \\ Flagstaff, AZ \\ May 17-19, 2024

## PREMIUM WEEKEND PASS WITH CAMPING ATTENDEES

**THANK YOU FOR CHOOSING OVERLAND EXPO WEST AS YOUR NEXT ADVENTURE!**

The entire Overland Expo Team cannot wait to celebrate our 15<sup>th</sup> West event with you! Please familiarize yourself with these arrival instructions and other valuable information pertaining to your pass type and trip!

---

### **\*\*OFF-SITE CHECK-IN LOCATION INFO\*\***

#### **Check-in at the KC HiLites Headquarters in Flagstaff**

For your convenience, we have created an off-site **check-in location** for all Premium Pass attendees this year. **Before** you arrive at the event venue, you will proceed to check-in and receive your event credentials at the **KC HiLites Headquarters** in Flagstaff.

**KC HiLites Headquarters**  
**1751 S Thompson St, Flagstaff, AZ 86001**

---

#### **OFF-SITE PREMIUM CAMPING CHECK-IN HOURS:**

- Thursday, May 16th (8:00 AM – 6:00 PM)
- Friday, May 17th (8:00 AM – 6:00 PM)
- Saturday, May 18th (8:00 AM – 5:00 PM)

**YOU MUST ARRIVE WITHIN THE DESIGNATED CHECK-IN HOURS-NO EXCEPTIONS!**

#### **PREMIUM CAMPING ATTENDEE GATE HOURS:**

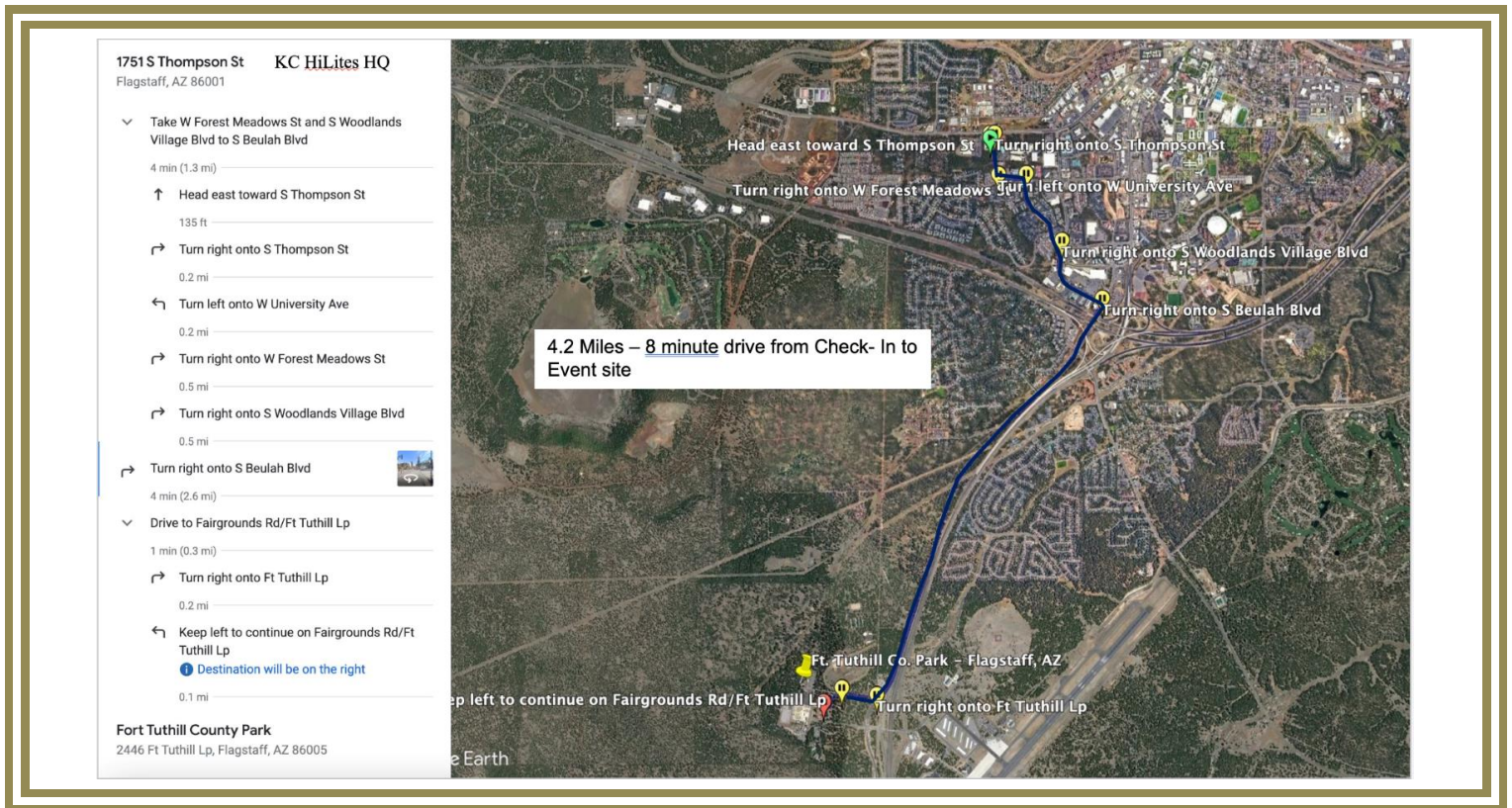
- Friday, May 17th (8:00 AM – 5:00 PM)
- Saturday, May 18th (8:00 AM – 5:00 PM)
- Sunday, May 19th (9:00 AM – 3:00 PM)

---

## **ARRIVAL**

- Upon arrival at the **KC HiLites Headquarters**, park, and then proceed to the Premium Camping Check-in that will take place outside of the building.
- Your QR code is your ticket! Please have your QR code (print / digital) ready for check-in.
- Please **REVIEW** and **SIGN** the general liability waiver located in your ticket confirmation email; this is required before your arrival onsite.
- Once you've received your credentials (Camping Window Cling & Premium Attendee Badge), then you will head on over to the Overland Expo event site at Fort Tuthill and proceed to the campgrounds.

## KC HILITES ROUTE MAP TO FORT TUTHILL COUNTY PARK



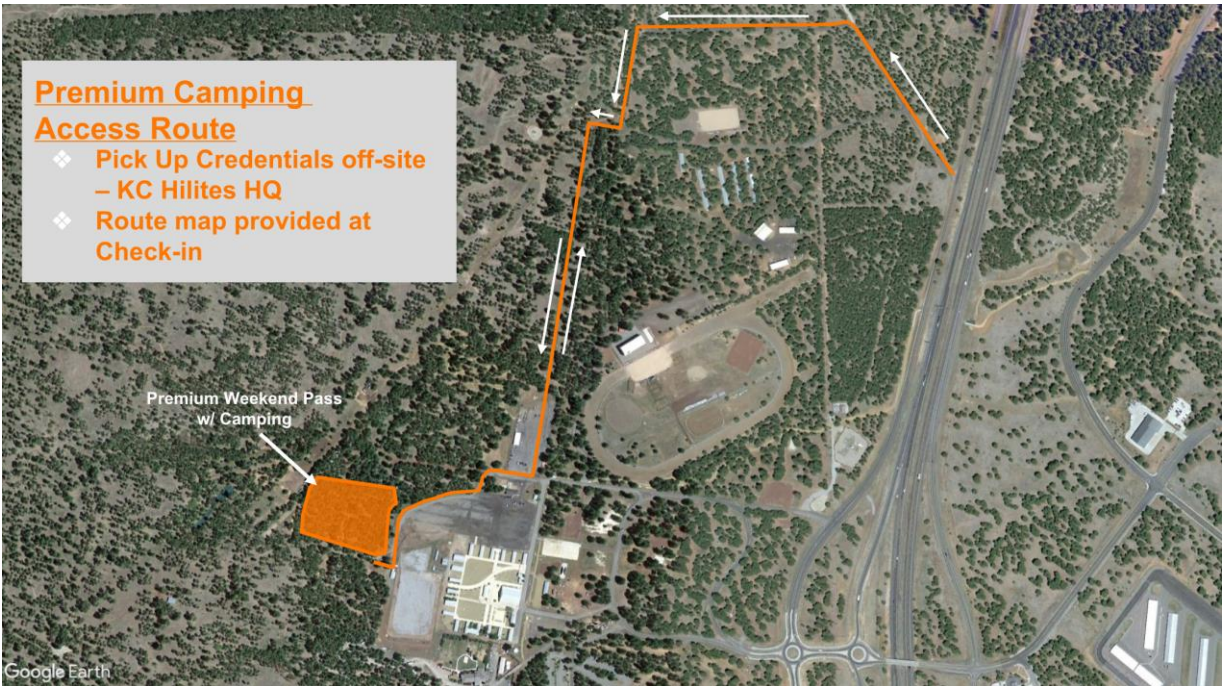
### KC HiLites:

- [KC HiLites](#) will also be holding HQ tours during the daytime from Thursday, May 16<sup>th</sup> – Saturday, May 18<sup>th</sup> for anyone that checks in at their headquarters location.
- Register for the KC HiLites Tours via this [LINK](#).

### PREMIUM CAMPING:

- Follow this set of directions below for ONSITE EVENT CAMPING:
  - FROM S. BEULAH BLVD / 89A, TURN ONTO PURPLE SAGE TRAIL.
  - FROM PURPLE SAGE, TURN LEFT ONTO INFANTRY RD THEN REMAIN STRAIGHT ON REGIMENT ROAD & FOLLOW DIRECTIONAL SIGNAGE & CAMPING ATTENDANTS TO THE PREMIUM WEEKEND PASS WITH CAMPING PLACEMENT WITH YOUR HANG TAG READY.
  - Do **NOT** enter at the main Fort Tuthill County Park entrance
- Upon entering the venue, the Camping hosts will be available to place you in your campsite location.
  - If you need to leave your campsite / the venue to return at a later time, you MUST keep your Camping Window Cling displayed at all times.
  - Your Premium Attendee Badge MUST be worn at all times for access to the event and campgrounds. We will not provide replacements.

## PREMIUM WEEKEND PASS WITH CAMPING ARRIVAL MAP



### REMINDERS

- All campsites are on a first-come, first-serve basis. If camping with another party, then they must carry the same pass type as you and arrive at the same time to be placed next to one another. NO saving space in the campgrounds for others. Please be understanding during camping placement, as Staff will assist all campers in the designated spaces. It is festival-style camping: you will be close to your neighbor.
- Only Overland style campers are allowed. If exceeding 13' please [CONTACT US](#).
- [Kakadu](#) will be our event shower provider, available for Camping passholders. **Kakadu Shower Hours:** 6:30 AM - 9:30 AM and 6:00 PM – 9:00 PM
- Be sure to fill your water tanks prior to arrival, as potable water will be limited to filling water bottles **only**.
- Backpacks are permitted to bring necessities.
- Quiet hours begin at 10 PM each evening, please be respectful of your neighbor.
- If ADA camping accommodations have been requested, please present your ADA placard and a Camp Host will place you accordingly.
- Smoking (this includes e-cigarettes and vapes) is allowed in designated areas only.
- Well-behaved and leashed dogs are welcome at Overland Expo.
- ONLY Propane fires with an on & off switch are allowed.
- Check out for the Premium Campgrounds is 11 AM on Monday, May 20, 2024

## PLAN AHEAD

- Download the [Official Overland Expo App](#) Powered by [Mercedes-Benz of Northern Arizona](#). Choose the 2024 WEST Event. Log in with your unique email used within your ticket registration. The app will provide a venue map that will guide you to exhibitors, food vendors, and the general class schedule. Create your account PRIOR to arriving at the event.
- Check out our general [FAQ](#) for more information on campground amenities, rules, kids, dogs, media usage, vehicle restrictions, and MORE!
- For event specifics, check out our [WEST FAQ](#).
- Please review our [SHOW UPDATES](#) for the newest map, schedules, exhibitor lists, and final announcements.
- Interested in upgrading your pass? In need of adding on additional passengers or merchandise to your order? [CONTACT US](#) for further assistance!

---

### Your Premium Weekend Pass with Camping Details:

The Premium Weekend Pass With Vehicle Camping Package provides the below access for one (1) Adult and one (1) Vehicle including:

- Premium Weekend Pass admission to Overland Expo May 17-19, 2024;
- Fort Tuthill County Campgrounds Premium on-site upgraded campsite Thurs – Mon;
- Access to the exclusive hospitality lounge;
- Plus, enjoy 120+ general activities: demos, roundtables, slideshows, and evening films;
- Shop the exhibitor midway;
- First drink free at Welcome Reception and Happy Hours (Thurs, Fri & Sat evenings, 5-7 PM);
- Badge, Goody bag + Sourcebook Magazine

---

**THANK YOU AGAIN FOR JOINING US & CHEERS TO ANOTHER GREAT OVERLAND EXPO WEST!**

**~ THE OVERLAND EXPO TEAM ~**