



Fort Tuthill County Park \\ Flagstaff, AZ \\ May 17-19, 2024

WEEKEND PASS WITH LARGE CAMPSITE ATTENDEES

THANK YOU FOR CHOOSING OVERLAND EXPO WEST AS YOUR NEXT ADVENTURE!

The entire Overland Expo Team cannot wait to celebrate our 15TH West event with you! Please familiarize yourself with these arrival instructions and other valuable information pertaining to your pass type and trip! See you by the campfire!

**** ON-SITE CHECK-IN LOCATION INFO ****

Check-in on-site at Fort Tuthill County Park in Flagstaff

For your convenience, the venue will be the **check-in location** for all Weekend Pass with Large Campsite Attendees this year.

**Ft. Tuthill County Park
2446 Fort Tuthill Loop, Flagstaff, AZ 86005**

LARGE CAMPSITE CHECK-IN HOURS:

- Thursday, May 16th (8:00 AM – 6:00 PM)
- Friday, May 17th (8:00 AM – 6:00 PM)
- Saturday, May 18th (8:00 AM – 5:00 PM)

YOU MUST ARRIVE WITHIN THE DESIGNATED CHECK-IN HOURS-NO EXCEPTIONS!

LARGE CAMPSITE ATTENDEE GATE HOURS:

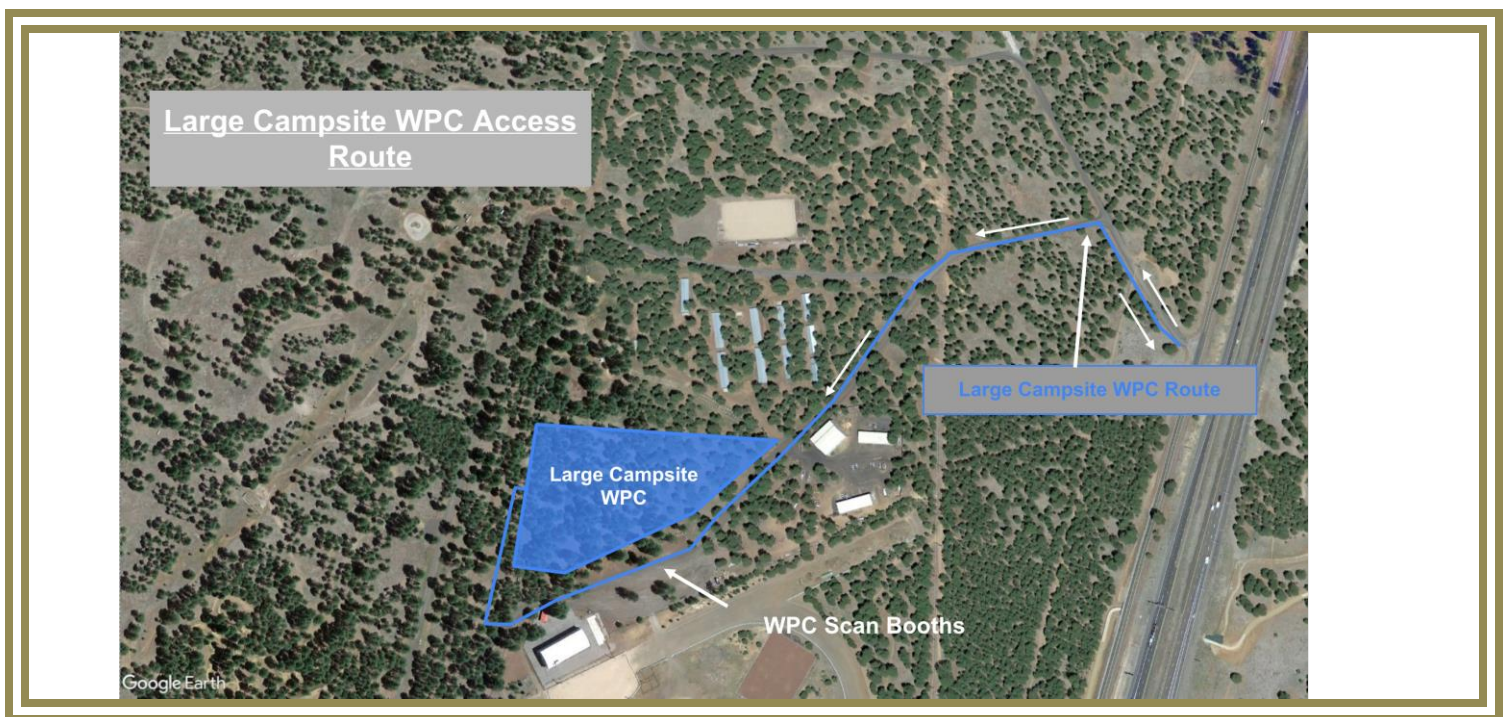
- Friday, May 17th (8:00 AM – 5:00 PM)
- Saturday, May 18th (8:00 AM – 5:00 PM)
- Sunday, May 19th (9:00 AM – 3:00 PM)

ARRIVAL

- Your QR code is your ticket! Please have your QR code (print / digital) ready for a smooth check-in process.
- Please REVIEW and SIGN the general liability waiver located in your ticket confirmation email; this is required before your arrival onsite.
- For a quick staging process, follow the set of directions below:
 - FROM S. BEULAH BLVD / 89A, TURN ONTO PURPLE SAGE TRAIL.
 - FROM PURPLE SAGE, TURN LEFT ONTO INFANTRY RD & FOLLOW DIRECTIONAL SIGNAGE AND CAMP HOSTS TO THE WEEKEND PASS WITH LARGE CAMPSITE CHECK-IN
 - Do **NOT** enter at the main Fort Tuthill County Park entrance

- Upon entering the path, proceed to the staging lanes. Overland Expo Staff will verify your Weekend Pass with Camping Registration, scan your QR code, issue your REQUIRED credentials for the weekend (Camping Window Cling & Wristband), and then guide you to your campsite.
 - If you need to leave your campsite/venue to return at a later time, you MUST keep your Camping Window Cling displayed at all times.
 - Your admission credentials MUST be worn at all times for access to the campgrounds and the event. We will not provide replacements.

WEEKEND PASS WITH LARGE CAMPSITE ARRIVAL MAP



REMINDERS

- All campsites are on a first-come, first-serve basis. If camping with another party, then they must carry the same pass type as you and arrive at the same time to be placed next to one another. NO saving space in the campgrounds for others. Please be understanding during camping placement, as Staff will assist all campers in the designated spaces.
- It is festival-style camping: you will be close to your neighbor.
- **You MUST fit your setup within the 20x20 parameters.**
- Only Overland style campers are allowed. If exceeding 13' please [CONTACT US](#).
- [Kakadu](#) will be our event shower provider, available for Camping passholders. **Kakadu Shower Hours:** 6:30 AM - 9:30 AM and 6:00 PM – 9:00 PM
- Be sure to fill your water tanks prior to arrival, as potable water will be limited to filling water bottles **only**.
- Backpacks are permitted to bring necessities.
- Quiet hours begin at 10 PM each evening, please be respectful of your neighbor.

- If ADA camping accommodations have been requested, please present your ADA placard and a Camp Host will place you accordingly.
- Smoking (this includes e-cigarettes and vapes) is allowed in designated areas only.
- Well-behaved and leashed dogs are welcome at Overland Expo.
- ONLY Propane fires with an on & off switch are allowed.
- Check out for the Large Campsite Campgrounds is 11 AM on Monday, May 20, 2024

PLAN AHEAD

- Download the [Official Overland Expo App](#) powered by [Mercedes-Benz of Northern Arizona](#). Choose the 2024 WEST Event. Log in with your unique email used within your ticket registration. The app will provide a venue map that will guide you to exhibitors, food vendors, and the general class schedule. Create your account PRIOR to arriving at the event.
 - Check out our general [FAQ](#) for more information on campground amenities, rules, kids, dogs, media usage, vehicle restrictions, and MORE!
 - For event specifics, check out our [WEST FAQ](#).
 - Please review our [SHOW UPDATES](#) for the newest map, schedules, exhibitor lists, and final announcements.
 - Interested in upgrading your pass? In need of adding on additional passengers or merchandise to your order? [CONTACT US](#) for further assistance!
-

Your Weekend Pass with Large Campsite Credential Details:

The Large Campsite provides the below access for one (1) Adult and one (1) Vehicle including:

- Weekend Pass admission to Overland Expo May 17-19, 2024;
 - Plus, enjoy 120+ general activities: demos, roundtables, slideshows, and evening films;
 - Shop the exhibitor midway & food vendors;
 - Designated 20x20 upgraded campsite
 - Sourcebook Magazine
-

THANK YOU AGAIN FOR JOINING US & CHEERS TO ANOTHER GREAT OVERLAND EXPO WEST!

~ THE OVERLAND EXPO TEAM ~