



The Ranch | Loveland, CO | August 23-25, 2024

MEDIA PASSHOLDERS

THANK YOU FOR CHOOSING OVERLAND EXPO MOUNTAIN WEST AS YOUR NEXT ADVENTURE!

The entire Overland Expo Team cannot wait to celebrate another Mountain West event with you! Please familiarize yourself with these arrival instructions and other valuable information pertaining to your pass type and trip!

ON-SITE VENUE CHECK-IN LOCATION

**The Ranch
5280 Arena Cir. Loveland, CO 80538**

MEDIA CHECK-IN HOURS:

- Thursday, August 22nd (8:00 AM – 6:00 PM)
- Friday, August 23rd (8:00 AM – 6:00 PM)
- Saturday, August 24th (8:00 AM – 5:00 PM)

YOU MUST ARRIVE WITHIN THE DESIGNATED CHECK-IN HOURS-NO EXCEPTIONS!

SHOW HOURS:

Gates Only Open During The Hours Below

- Friday, August 23rd (8:00 AM – 5:00 PM)
- Saturday, August 24th (8:00 AM – 5:00 PM)
- Sunday, August 25th (9:00 AM – 3:00 PM) - NEW HOURS

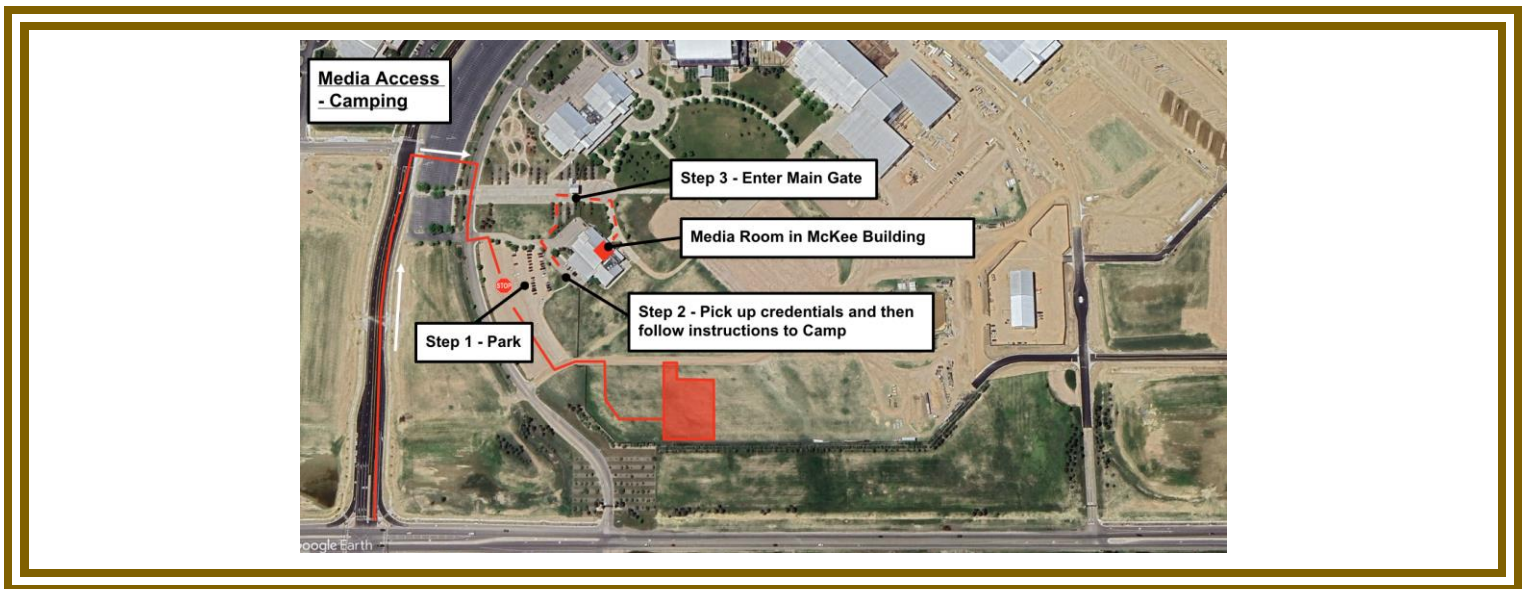
ARRIVAL

- Upon arrival at **The Ranch**, proceed to the Camping Check-in Tent that will take place in the 4H parking lot, located behind the McKee Building.
 - Your QR code is your ticket! Please have your QR code (print / digital) ready for check-in.
 - Please REVIEW and SIGN the general liability waiver located in your ticket confirmation email; this is required before your arrival onsite.
 - Once you've received your credentials (Camping Hang Tag & Media Badge), then you will proceed to the show for access.
-

ON-SITE MEDIA - CAMPING:

- Follow this set of directions below for ONSITE EVENT CAMPING:
 - **Enter off of N Fairgrounds Ave, turn onto Arena Circle.**
 - From Arena Circle, follow signage / traffic personnel to the assigned entry gate & parking location
- Upon entering the venue, Overland Expo Staff and signage will direct you to the Media Check-In at the 4H parking lot behind the McKee Building.
 - Once you have parked, proceed to the check-in tent and your Media Pass will be scanned.
 - You will receive a swag bag, show materials, such as our Overland Expo Visitor's Guide which includes an event map and daily schedules.
- After receiving your credentials at check-in, camping attendants will be available to place you in your campsite location.

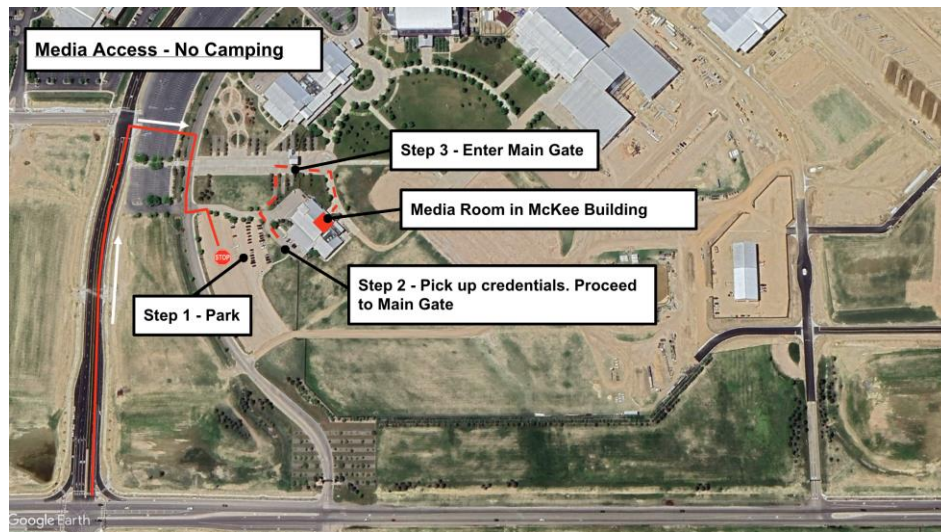
MEDIA PASSHOLDER ARRIVAL MAP (ON-SITE CAMPING)



OFF-SITE MEDIA – NO CAMPING:

- Follow this set of directions below for PARKING ONSITE:
 - **Enter off of N Fairgrounds Ave, turn onto Arena Circle.**
 - From Arena Circle, follow signage / traffic personnel to the assigned entry gate & parking location
- Upon entering the venue, Overland Expo Staff and signage will direct you to the Media Check-In at the 4H parking lot behind the McKee Building.
 - Once you have parked, proceed to the check-in tent and your Media Pass will be scanned.
 - You will receive a swag bag, show materials, such as our Overland Expo Visitors Guide which includes an event map and daily schedules.
- After receiving your credentials at check-in, parking attendants will be available to guide you to your parking location.

MEDIA PASSHOLDER ARRIVAL MAP (ON-SITE PARKING ONLY - NO CAMPING -)



MEDIA ROOM

- Media Passholders will have exclusive access to the Media Room. This room may be utilized for content production.
- Lunch will be provided on both Friday and Saturday from 11:30 AM - 1:30 PM in the Media Room.
- MUST present your Media credentials for lunch and Media Room access.
- The Media Room is located within the McKee Building. The McKee Building can be accessed upon entering through the front main attendee walk-up event entrance, then proceed to the right.
- The Overland Expo MOUNTAIN WEST Media Room Sponsors are as follows:
 - [Vertex Vans](#) (Friday: 11:30 AM - 1:30 PM)
 - [Denali Campers](#) (Saturday: 11:30 AM - 1:30 PM)

REMINDERS

- All campsites are on a first-come, first-serve basis. If camping with another party, then they must carry the same pass type as you and arrive at the same time to be placed next to one another. NO saving space in the campgrounds for others. Please be understanding during camping placement, as Staff will assist all campers in the designated spaces. It is festival-style camping: you will be close to your neighbor.
- Only Overland style campers are allowed. If exceeding 13' please [CONTACT US](#).
- [Kakadu](#) will be our event shower provider, available for Camping passholders.
 - **Kakadu Shower Hours:** 6:30 AM - 9:30 AM and 6:00 PM – 9:00 PM
- Be sure to fill your water tanks prior to arrival, as potable water will be limited to filling water bottles **only**.
- Backpacks are permitted to bring necessities.
- Quiet hours begin at 10 PM each evening, please be respectful of your neighbor.
- If ADA camping accommodations have been requested, please present your ADA placard and a Camp Host will place you accordingly.
- Smoking (this includes e-cigarettes and vapes) is allowed in designated areas only.
- Well-behaved and leashed dogs are welcome at Overland Expo.
- ONLY Propane fires with an on & off switch are allowed.
- Check out for the Media Campgrounds is 11 AM on Monday, August 26, 2024

PLAN AHEAD

- Download the [Official Overland Expo App](#). Choose the 2024 MOUNTAIN WEST Event. Log in with your unique email used within your ticket registration. The app will provide a venue map that will guide you to exhibitors, food vendors, and the general class schedule. Create your account PRIOR to arriving at the event.

- Check out our general [FAQ](#) for more information on campground amenities, rules, kids, dogs, media usage, vehicle restrictions, and MORE!
 - For event specifics, check out our [MTN WEST FAQ](#).
 - Please review [SHOW UPDATES](#) for the newest map, schedules, exhibitor lists, and final announcements.
 - In need of adding on additional passengers or merchandise to your order? [CONTACT US](#) for further assistance!
-

Your Media Credential Details:

Media Pass provides the below access for one (1) Adult and one (1) Vehicle including:

- Media Pass admission to Overland Expo Mountain West August 23-25, 2024 (all days – Fri-Sun);
- The Ranch Special campsite within the exhibitor row Thurs – Mon;
- Enjoy 120+ general activities: demos, roundtables, and slideshows;
- Shop the exhibitor midway;
- Entrance to event after parties;
- First drink free at Welcome Reception and Happy Hours (Thurs-Sat);
- Swag Bag, Credentials, Overland Expo Visitor's Guide + Sourcebook Magazine;
- Exclusive access to the Media Room for lunch, discussions, and content production;
- Complimentary Lunch (Friday & Saturday | 11:30 AM - 1:30 PM)

Marni Illman : | (978) 844-3513 | marni@cgprpublicrelations.com

THANK YOU AGAIN FOR JOINING US & CHEERS TO ANOTHER GREAT OVERLAND EXPO MOUNTAIN WEST!

~ THE OVERLAND EXPO TEAM ~