



# OVERLAND EXPO EAST 2024

Oak Ridge Estate | Arrington, VA | October 4-6, 2024

## CONTENT CREATORS

THANK YOU FOR CHOOSING OVERLAND EXPO EAST AS YOUR NEXT ADVENTURE!

The entire Overland Expo Team cannot wait to celebrate another East event with you! Please familiarize yourself with these arrival instructions and other valuable information pertaining to your pass type and trip!

### Oak Ridge Estate

1265-1187 Oak Ridge Road | Arrington, Virginia 22922

**\*Use this address only-DO NOT rely on the Google Maps location\***

#### CONTENT CREATOR CHECK-IN HOURS:

- Thursday, October 3<sup>rd</sup> | 10:00 AM – 3:00 PM
- Attend the mandatory Showcase & DIY / Creator Area Meeting on Thursday at 3:30pm in the Storytelling Pavilion.

**YOU MUST ARRIVE WITHIN THE DESIGNATED CHECK-IN HOURS-NO EXCEPTIONS!**

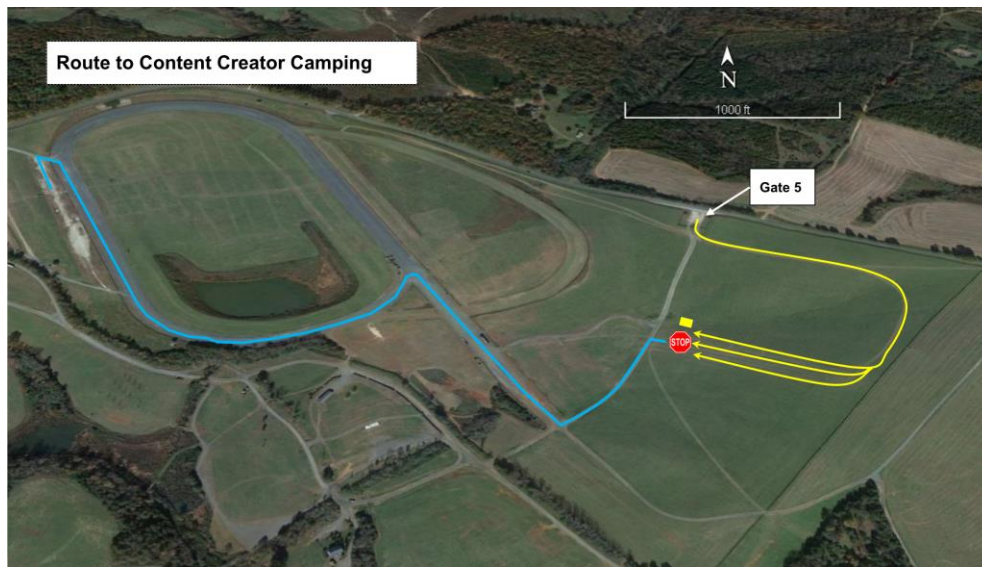
#### NEW SHOW HOURS:

Friday, October 4<sup>th</sup> | 9:00 AM – 5:00 PM  
Saturday, October 5<sup>th</sup> | 9:00 AM – 5:00 PM  
Sunday, October 6<sup>th</sup> | 9:00 AM – 3:00 PM

## ARRIVAL

- Upon arrival at **Oak Ridge Estate**, proceed to the Camping Check-in Tent along the hillside.
- Your QR code is your ticket! Please have your QR code (print / digital) ready for check-in.
- Please REVIEW and SIGN the general liability waiver located in your ticket confirmation email; this is required before your arrival onsite.
- Once you've received your credentials (Vehicle Hang Tag & Content Creator Badge), then you will **call / text Azure at 941-260-6670** so that she can place you in your campsite location in the Creator Area.
  - Once your vehicle has been placed in the Content Creator Area (which must happen by 3:00pm on Thursday), you are not to move your vehicle until a staff person has given you the "all clear" to move your vehicle, no earlier than 3:30pm on Sunday (we must wait until all attendees have cleared the venue); check out for the venue is 11 AM on Monday, October 7, 2024.

## CONTENT CREATOR ARRIVAL MAP - ON-SITE CAMPING



### ON-SITE CONTENT CREATOR ARRIVAL - CAMPING:

- Follow the address above to Oak Ridge Road; then enter Gate 5.
- Upon entering the venue at Gate 5, Overland Expo Staff and signage will direct you to Check-In along the hillside.
  - Once you have parked, proceed to the check-in tent and your Content Creator Pass will be scanned.
  - You will receive a swag bag, and show materials, such as our Overland Expo Visitor's Guide which includes an event map and daily schedules.
- After receiving your credentials at check-in, Azure will be available to place you in your Content Creator campsite location.
  - Your Content Creator Badge **MUST** always be worn for access to the event and campgrounds. We will not provide replacements.

### REMINDERS

- Your campsite for the Content Creator Area will be assigned by Azure and you will be placed in that spot upon your arrival. The Content Creator Area is **ONLY** for approved Content Creator attendees – do **NOT** invite others to camp with you here.
- It is festival-style camping: you will be close to your neighbor.
- [Kakadu](#) will be our event shower provider, available for Camping passholders.
  - **Kakadu Shower Hours:** 6:30 AM - 9:30 AM and 6:00 PM – 9:00 PM
  - Showers are available in the Weekend Pass with Camping and Premium Camping Areas
  - Showers begin Thursday evening and end Sunday morning
- Be sure to fill your water tanks prior to arrival, as potable water will be limited to filling water bottles **only**.
- Backpacks are permitted to bring necessities.
- Sunscreen is recommended.
- Quiet hours begin at 10 PM each evening, please be respectful of your neighbor.
- Well-behaved and leashed dogs are welcome at Overland Expo. Please clean up after your pets!
- **ONLY** Propane fires with an on & off switch are allowed.
- Content Creator move out will begin Sunday, October 6, 2024 no earlier than 3:30pm, but you must wait to move your vehicle until a staff person has given you the “all clear” to move your vehicle (we must wait until all attendees have cleared the venue); check out for the venue is 11 AM on Monday, October 7, 2024.

---

## PLAN AHEAD

- Download the [Official Overland Expo App](#). Confirm you are entering the 2024 EAST Event. Log in with your unique email used within your Content Creator registration. The app will provide a venue map that will guide you to exhibitors, food vendors, and the general class schedule. Create your account PRIOR to arriving at the event.
  - If this is a different email than you usually use to correspond with Azure, **PLEASE LET HER KNOW** -again, so you are able to accurately access your schedule.
- Check out our general [FAQ](#) for more information on campground amenities, rules, kids, dogs, media usage, vehicle restrictions, and MORE!
- For event specifics, check out our [EAST FAQ](#).
- Please review our [SHOW UPDATES](#) for the newest map, schedules, exhibitor lists, and final announcements.
- **REVIEW** your teaching schedule in the app and assigned times and class location. All times and locations are confirmed and cannot be changed.
- **MAKE note of your schedule, but do not select your classes or any other classes in the app** — space is limited and this takes space away from paying attendees.
- **REVIEW** the maps and class location in the app AND NOTE where your classes are held.
- Review the [Instructor / Presenter Schedule Guide](#). Be prepared with all of your supplies needed for your presentation.
- In need of adding on additional passengers, merchandise or raffle tickets to your order?
  - [CONTACT US](#) for further assistance!

---

### Your Content Creator Details:

The Content Creator Camping Package provides the below access for one (1) Adult and one (1) Vehicle including:

- General Weekend Pass admission to Overland Expo East October 4-6, 2024 (all days – Fri-Sun);
- The Oak Ridge Estate Special campsite within the exhibitor row Thurs – Mon;
- Enjoy 120+ general activities: demos, roundtables, and slideshows;
- Shop the exhibitor midway;
- Entrance to event after parties;
- Viewing of the Film Festival
- First drink free at Welcome Reception and Happy Hours (Thurs-Sat);
- Swag Bag, Credentials, Overland Expo Visitor's Guide + Sourcebook Magazine

**Azure O'Neil:** [azure.oneil@overlandexpo.com](mailto:azure.oneil@overlandexpo.com) / 941-260-6670

**THANK YOU AGAIN FOR JOINING US & CHEERS TO ANOTHER GREAT OVERLAND EXPO EAST!**

**~ THE OVERLAND EXPO TEAM ~**