



Oak Ridge Estate | Arrington, VA | October 4-6, 2024

FOREST WEEKEND PASS WITH CAMPING

THANK YOU FOR CHOOSING OVERLAND EXPO EAST AS YOUR NEXT ADVENTURE!

The entire Overland Expo Team cannot wait to celebrate another East event with you! Please familiarize yourself with these arrival instructions and other valuable information pertaining to your pass type and trip!

Oak Ridge Estate

1265-1187 Oak Ridge Road | Arrington, Virginia 22922

Use this address only-DO NOT rely on the Google Maps location

FOREST CAMPING CHECK-IN HOURS:

Thursday, October 3rd | 8:00 AM – 6:00 PM

Friday, October 4th | 9:00 AM – 6:00 PM

Saturday, October 5th | 9:00 AM – 4:00 PM

YOU MUST ARRIVE WITHIN THE DESIGNATED CHECK-IN HOURS-NO EXCEPTIONS!

***NEW* SHOW HOURS:**

Friday, October 4th | 9:00 AM – 5:00 PM

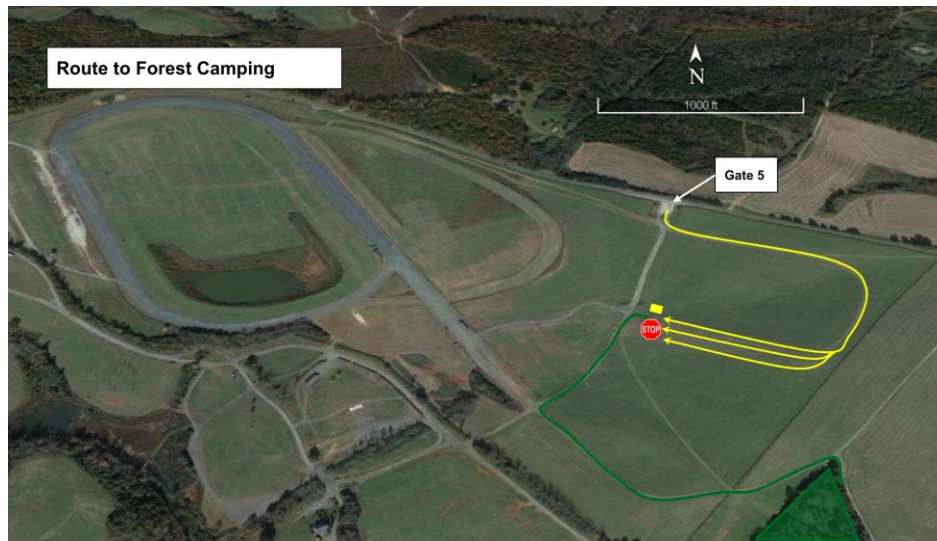
Saturday, October 5th | 9:00 AM – 5:00 PM

Sunday, October 6th | 9:00 AM – 3:00 PM

ARRIVAL

- Upon arrival at **Oak Ridge Estate**, proceed through Gate 5 to the Camping Check-in Tent along the hillside.
- Your QR code is your ticket! Please have your QR code (print / digital) ready for check-in.
- Please REVIEW and SIGN the general liability waiver located in your ticket confirmation email; this is required before your arrival onsite.

Once you've received your credentials (Camping Hang Tag & Badge), then you will proceed to the campgrounds. **FOREST WEEKEND PASS WITH CAMPING ARRIVAL MAP**



FOREST WEEKEND PASS WITH CAMPING:

- Follow this set of directions below for ONSITE EVENT CAMPING:
 - **Enter off Oak Ridge Road, turn into Gate 5.**
- Upon entering the venue at Gate 5, Overland Expo Staff and signage will direct you to the Camping Check-In, located along the hillside.
 - Once you have parked, proceed to the check-in tent and your Forest Camping ticket will be scanned.
 - You will receive show materials, such as our Overland Expo Visitor's Guide, which includes an event map and daily schedules.
- After receiving your credentials at check-in, the Camping hosts will be available to place you in your campsite location.
 - If you need to leave your campsite / the venue to return at a later time, you **MUST** keep your Camping Hang Tag displayed at all times.
 - Gate 5 will remain at 24 Hour Gate, but you must have your credentials to access
 - Your Credentials **MUST** be worn at all times for access to the event and campgrounds. We will not provide replacements.

REMINDERS

- All campsites are on a first-come, first-serve basis. If camping with another party, then they must carry the same pass type as you and arrive at the same time to be placed next to one another. NO saving space in the campgrounds for others. Please be understanding during camping placement, as Staff will assist all campers in the designated spaces. It is festival-style camping: you will be close to your neighbor.
- Only Overland style campers are allowed. If exceeding 15' please [CONTACT US](#).
- [Kakadu](#) will be our event shower provider, available for Camping passholders.
 - Kakadu Shower Hours: 6:30 AM - 9:30 AM and 6:00 PM – 9:00 PM
 - Showers will be located in Weekend Pass with Camping area and Premium Weekend Pas with Camping area. There will be no showers in Forest Camping.
 - Showers begin Thursday evening and end Sunday morning
 - Be sure to fill your water tanks prior to arrival, as potable water will be limited to filling water bottles **only**.
- Backpacks are permitted to bring necessities.
- Sunscreen is recommended. Please bring with you!

- Quiet hours begin at 10 PM each evening, please be respectful of your neighbor.
- If ADA camping accommodations have been requested, please present your ADA placard and a Camp Host will place you accordingly.
- Well-behaved and leashed dogs are welcome at Overland Expo. Reminder, please clean up after your pet.
- Children Ages 14 and under are **FREE** with an adult admission and do not require a ticket.
- ONLY Propane fires with an on & off switch are allowed.
- Check out for the Forest Campgrounds is 11 AM on Monday, October 7, 2024.
- Shuttles will be available from Forest Camping to Show Entrance from 9am – 9pm Friday and Saturday and 9am – 3pm on Sunday.
- The walk from Forest Camping to Show Entrance is about 0.8 miles

PLAN AHEAD

- Download the [Official Overland Expo App](#). Confirm you are entering the 2024 EAST Event. Log in with your unique email used within your ticket registration. The app will provide a venue map that will guide you to exhibitors, food vendors, and the general class schedule. Create your account PRIOR to arriving at the event.
- Check out our general [FAQ](#) for more information on campground amenities, rules, kids, dogs, media usage, vehicle restrictions, and MORE!
- For event specifics, check out our [EAST FAQ](#).
- Please review our [SHOW UPDATES](#) for the newest map, schedules, exhibitor lists, and final announcements.
- Interested in upgrading your pass? In need of adding on additional passengers or merchandise to your order? [CONTACT US](#) for further assistance!

Your Forest Weekend Pass with Camping Details:

- The Forest Weekend Pass With Camping Package provides the below access for one (1) Adult and one (1) Vehicle including:
- General Weekend Pass admission to Overland Expo East October 4-6, 2024;
- The Oak Ridge Estate General on-site campsite Thurs – Mon;
- Plus, enjoy 120+ general activities: demos, roundtables, and slideshows;
- Shop the exhibitor midway;
- Viewing of the Film Festival;
- Access to the nightly happy hours (Thurs-Sat);
- Entrance to event after parties;
- Swag Bag, Credentials, Overland Expo Visitor's Guide + Sourcebook Magazine

**THANK YOU AGAIN FOR JOINING US &
CHEERS TO ANOTHER GREAT OVERLAND EXPO EAST!**

~ THE OVERLAND EXPO TEAM ~