



Fort Tuthill County Park \ Flagstaff, AZ \ May 16-18, 2025

## FIELD VAN GROUP CAMP ATTENDEES

**THANK YOU FOR CHOOSING OVERLAND EXPO WEST AS YOUR NEXT ADVENTURE!**

The entire Overland Expo Team cannot wait to celebrate our 16TH West event with you! Please familiarize yourself with these arrival instructions and other valuable information pertaining to your pass type and trip!

---

### **\*\*OFF-SITE CHECK-IN LOCATION INFO\*\***

#### **Check-in at the KC HiLites Headquarters in Flagstaff**

For your convenience, we have created an off-site **check-in location** for all Field Van Group Camp Attendees this year. **Before** you arrive at the event venue, you will proceed to check-in and receive your event credentials at the **KC HiLites Headquarters** in Flagstaff.

**KC HiLites Headquarters**  
**1751 S Thompson St, Flagstaff, AZ 86001**

---

#### **OFF-SITE GROUP CAMP CHECK-IN HOURS:**

- Thursday, May 15th (8:00 AM – 6:00 PM)
- Friday, May 16th (8:00 AM – 6:00 PM)
- Saturday, May 17th (8:00 AM – 5:00 PM)

**YOU MUST ARRIVE WITHIN THE DESIGNATED CHECK-IN HOURS-NO EXCEPTIONS!**

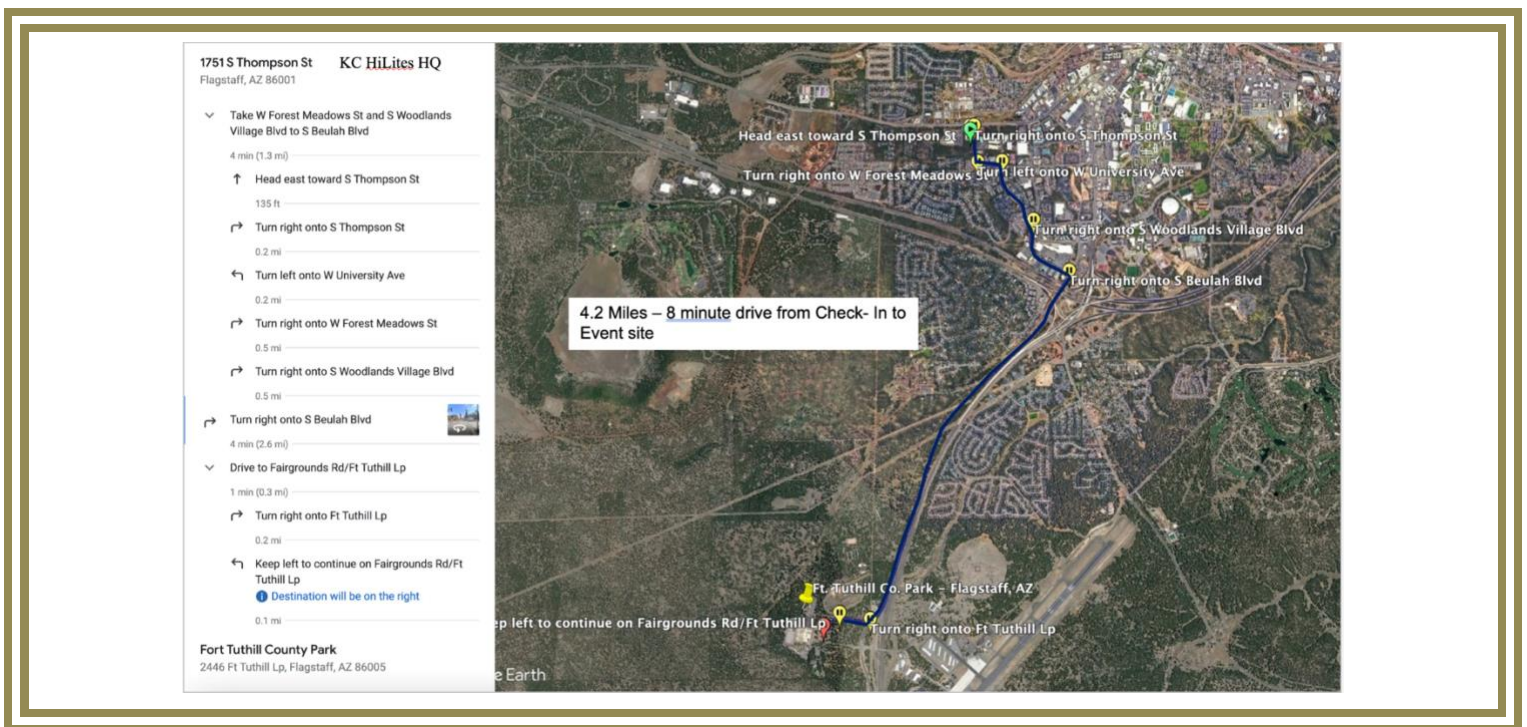
#### **GROUP CAMP ATTENDEE GATE HOURS:**

- Friday, May 16th (8:00 AM – 5:00 PM)
- Saturday, May 17th (8:00 AM – 5:00 PM)
- Sunday, May 18th (9:00 AM – 3:00 PM)

## ARRIVAL

- Upon arrival at the **KC HiLites Headquarters** follow directional signage and proceed to the Check-In lanes that will take place outside of the building in the parking lot.
- Your QR code is your ticket! Please have your QR code (print / digital) ready for check-in.
- Please REVIEW and SIGN the general liability waiver located in your ticket confirmation email; this is required before your arrival onsite.
- Once you've received your credentials (Camping Hang Tag & Field Van Group Camp credentials), then you will head on over to the Overland Expo event site at Fort Tuthill and proceed to the campgrounds.

### KC HILITES ROUTE MAP TO FORT TUTHILL COUNTY PARK



#### KC HiLites:

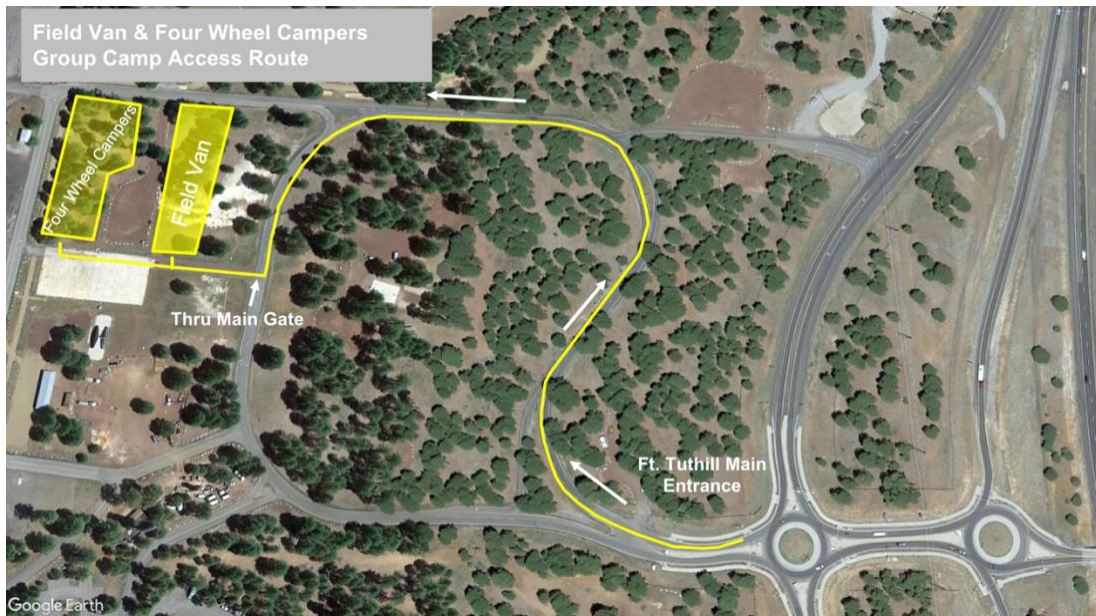
- **KC HiLites** will also be holding HQ tours during the daytime from Thursday, May 15<sup>th</sup> – Friday, May 16<sup>th</sup> for anyone that checks in at their headquarters location.
- Register for the KC HiLites Tours via this [LINK](#).

#### FIELD VAN GROUP CAMPSITE:

- Follow this set of directions below for ONSITE EVENT CAMPING:
  - FROM S. BEULAH BLVD / 89A, COME TO THE ROUND ABOUT AND ENTER FAIRGROUNDS ROAD.
  - FOLLOW DIRECTIONAL SIGNAGE & CAMPING ATTENDANTS TO THE GROUP CAMP PLACEMENT WITHIN THE EXHIBITOR FOOTPRINT WITH YOUR HANG TAG & CREDENTIALS READY.

- If you need to leave your campsite / the venue to return at a later time, you MUST keep your Camping Hang Tag displayed at all times.
- Your Field Van Group Camp Credentials MUST be worn at all times for access to the event and campgrounds. We will not provide replacements.

### FIELD VAN GROUP CAMP ARRIVAL MAP



### REMINDERS

- All campsites are on a first-come, first-serve basis. If camping with another party, then they must carry the same pass type as you and arrive at the same time to be placed next to one another. NO saving space in the campgrounds for others. Please be understanding during camping placement, as Staff will assist all campers in the designated spaces. It is festival-style camping: you will be close to your neighbor.
- [Kakadu](#) will be our event shower provider, available for Camping passholders.

#### Kakadu Shower Hours:

6:30 AM - 9:30 AM and 6:00 PM – 9:00 PM

- Be sure to fill your water tanks prior to arrival, as potable water will be limited to filling water bottles **only**.
- Backpacks are permitted to bring necessities.

- Quiet hours begin at 10 PM each evening, please be respectful of your neighbor.
- Smoking (this includes e-cigarettes and vapes) is allowed in designated areas only.
- Well-behaved and leashed dogs are welcome at Overland Expo.
- ONLY Propane fires with an on & off switch are allowed at the event
- Overland Expo will follow all State and Local fire restrictions as required at the time of the event. This could prohibit use of all propane fire pits or cooking units.
- ONLY Propane fires with an on & off switch are allowed.
- **You MUST keep your camping vehicle setup within the Group Camp for the duration of the event. Move out will begin Sunday, May 18, 2025 at 3PM.**
- The final check-out for the Group Camp Campgrounds is 11 AM on Monday, May 19, 2025.

## PLAN AHEAD

- Download the [Official Overland Expo App](#). Choose the 2025 WEST Event. Log in with your unique email used within your ticket registration. The app will provide a venue map that will guide you to exhibitors, food vendors, and the general class schedule. Create your account PRIOR to arriving at the event.
- Check out our general [FAQ](#) for more information on campground amenities, rules, kids, dogs, media usage, vehicle restrictions, and MORE!
- For event specifics, check out our [WEST FAQ](#).
- Please review our [SHOW UPDATES](#) for the newest map, schedules, exhibitor lists, and final announcements.
- Interested in upgrading your pass? In need of adding on additional passengers or merchandise to your order. [CONTACT US](#) for further assistance!

---

## Your Field Van Group Camp Pass Details:

The Field Van Group Camp Package provides the below access for one (1) Adult and one (1) Vehicle including:

- Weekend Pass admission to Overland Expo West May 16-18, 2025;
- Fort Tuthill County Campgrounds on-site upgraded campsite within the exhibitor footprint from Thurs – Mon;
- Plus, enjoy 120+ general activities: demos, roundtables, slideshows, and evening films;
- Shop the exhibitor midway & food vendors;
- Sourcebook Magazine

---

**THANK YOU AGAIN FOR JOINING US & CHEERS TO ANOTHER GREAT OVERLAND EXPO WEST!**

**~ THE OVERLAND EXPO TEAM ~**