



Fort Tuthill County Park \\ Flagstaff, AZ \\ May 16-18, 2025

MEDIA PASSHOLDERS

THANK YOU FOR CHOOSING OVERLAND EXPO WEST AS YOUR NEXT ADVENTURE!

The entire Overland Expo Team cannot wait to celebrate our 16th West event with you! Please familiarize yourself with these arrival instructions and other valuable information pertaining to your pass type and trip.

** OFF-SITE CHECK-IN LOCATION INFO**

Check-in at the KC HiLites Headquarters in Flagstaff

For your convenience, we have created an off-site **check-in location** for all Media Pass attendees this year. **Before** you arrive at the event venue, you will proceed to check-in and receive your event credentials at the **KC HiLites Headquarters** in Flagstaff.

KC HiLites Headquarters
1751 S Thompson St, Flagstaff, AZ 86001

OFF-SITE MEDIA CHECK-IN HOURS:

- Thursday, May 15th (8:00 AM – 6:00 PM)
- Friday, May 16th (8:00 AM – 6:00 PM)
- Saturday, May 17th (8:00 AM – 5:00 PM)

YOU MUST ARRIVE WITHIN THE DESIGNATED CHECK-IN HOURS-NO EXCEPTIONS!

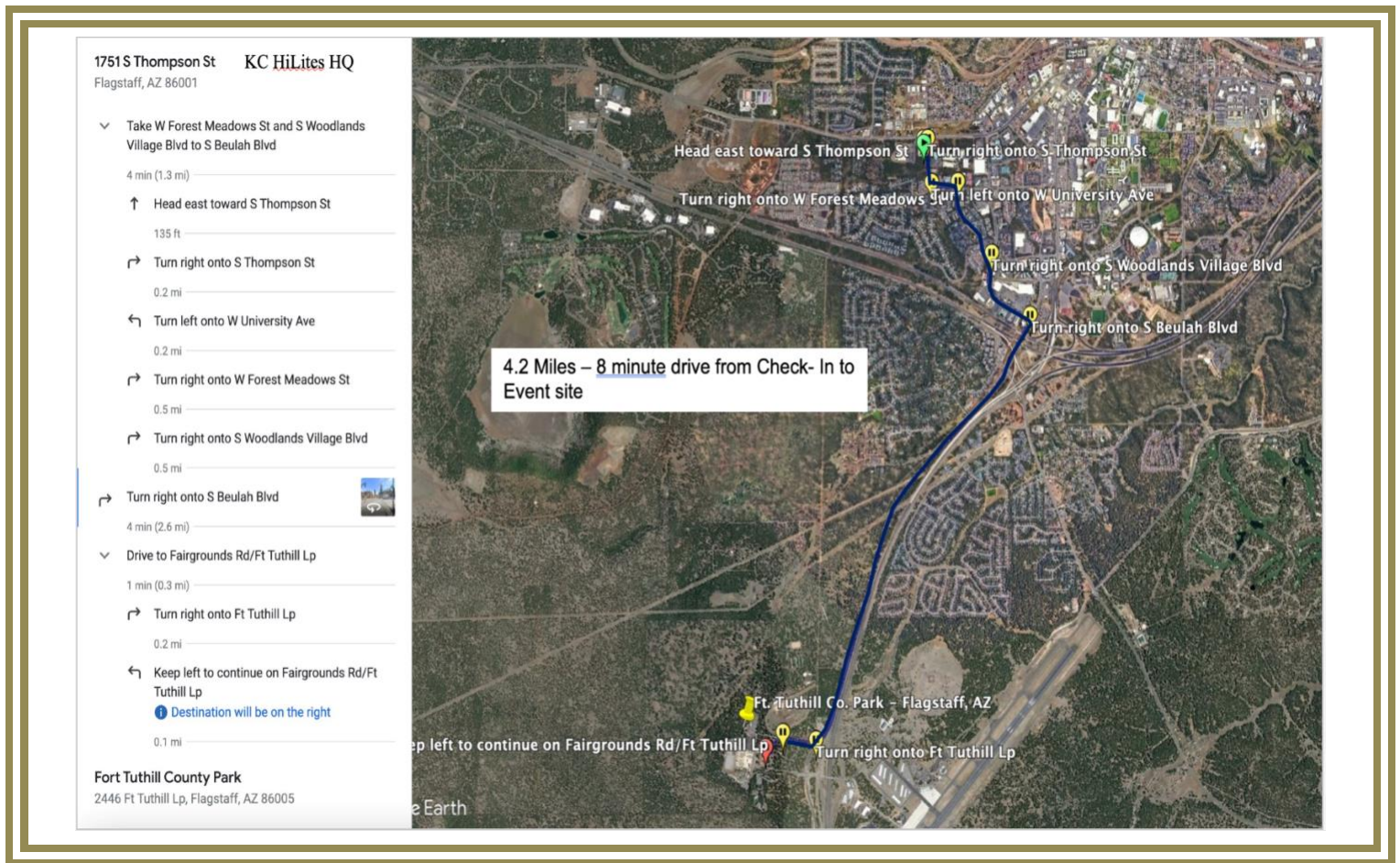
MEDIA ATTENDEE GATE HOURS:

- Friday, May 16th (8:00 AM – 5:00 PM)
- Saturday, May 17th (8:00 AM – 5:00 PM)
- Sunday, May 18th (9:00 AM – 3:00 PM)

ARRIVAL

- Upon arrival at the **KC HiLites Headquarters**, follow directional signage and proceed to the Check-In lanes that will take place outside of the building in the parking lot.
- Your QR code is your ticket! Please have your QR code (print / digital) ready for check-in.
- Please REVIEW and SIGN the general liability waiver located in your ticket confirmation email; this is required before your arrival onsite.
- You have the option of camping onsite or staying offsite and parking in the Red Lot on-site parking. Inform the check-in staff which you would like to do.
- Once you've received your credentials (Camping hang tag or Red parking lot pass & Media Badge), then you will head on over to the Overland Expo event site at Fort Tuthill.
- If choosing to camp, you will proceed to set up within the Campgrounds.

KC HILITES ROUTE MAP TO FORT TUTHILL COUNTY PARK



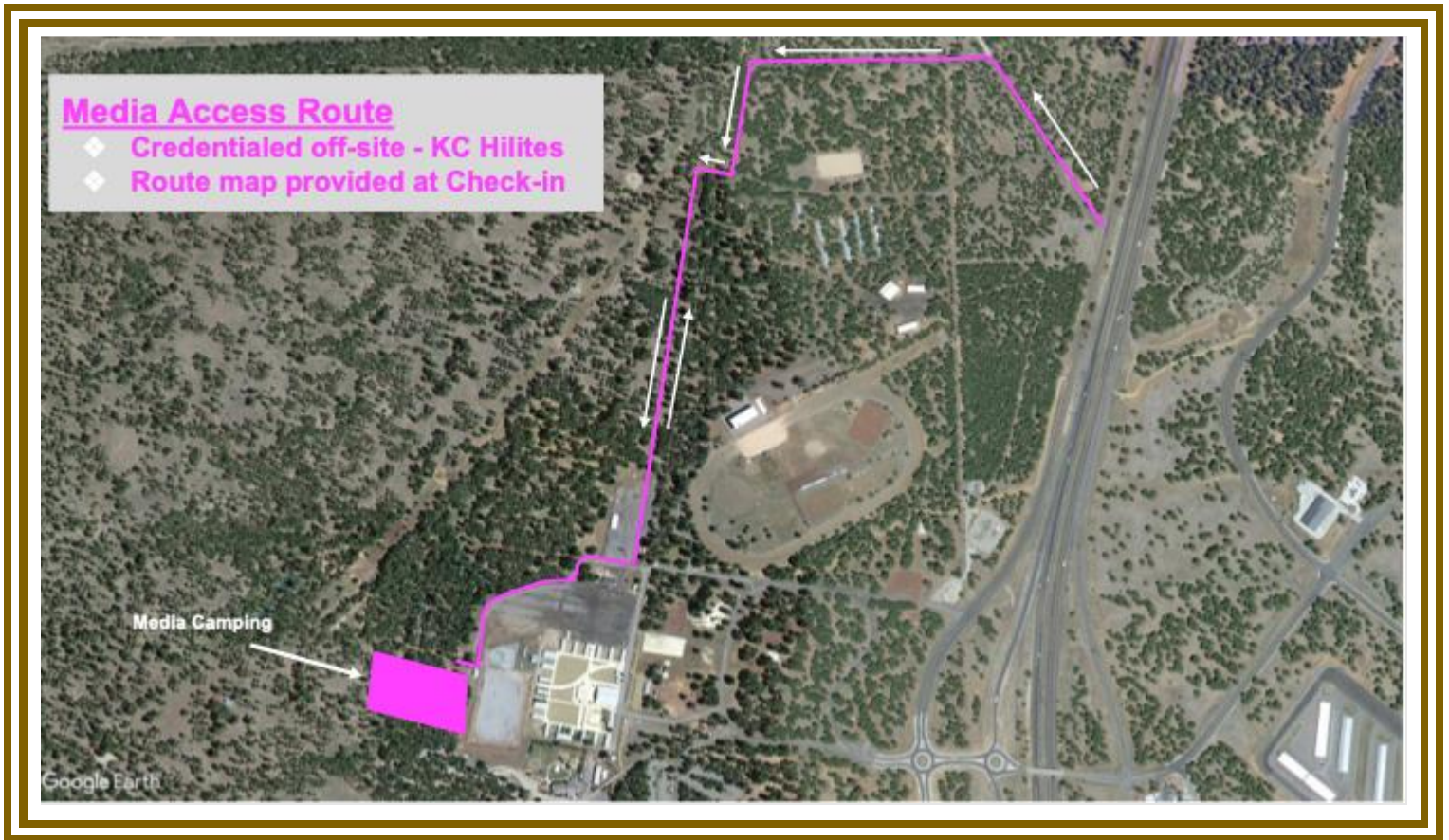
KC HiLites:

- **KC HiLites** will also be holding HQ tours during the daytime from Thursday, May 15th – Friday, May 16th for anyone that checks in at their headquarters location.
- Register for the KC HiLites Tours via this [LINK](#).

ON-SITE MEDIA - CAMPING:

- Follow this set of directions below for ONSITE EVENT CAMPING:
 - FROM S. BEULAH BLVD / 89A, TURN ONTO PURPLE SAGE TRAIL.
 - FROM PURPLE SAGE, TURN LEFT ONTO INFANTRY RD THEN REMAIN STRAIGHT ON REGIMENT ROAD & FOLLOW DIRECTIONAL SIGNAGE & CAMPING ATTENDANTS TO THE GENERAL WEEKEND PASS WITH CAMPING PLACEMENT WITH YOUR HANG TAG READY.
 - Do **NOT** enter at the main Fort Tuthill County Park entrance
- Upon entering the venue, the Camping hosts will be available to place you in your campsite location.
 - If you need to leave your campsite / the venue to return at a later time, you MUST keep your Camping Hang Tag displayed at all times.
 - Your Media Badge MUST be worn at all times for access to the event and campgrounds. We will not provide replacements.

MEDIA PASSHOLDER ARRIVAL MAP (ON-SITE CAMPING)



OFF-SITE MEDIA – NO CAMPING:

- Follow this set of directions below for PARKING ONSITE:
 - FROM S. BEULAH BLVD / 89A, ENTER AT THE MAIN FORT TUTHILL COUNTY PARK ENTRANCE.
 - FOLLOW THE ONE-WAY PATTERN UNTIL YOU RUN INTO THE FORK IN THE ROAD. KEEP RIGHT.
 - PROCEED TO THE RED LOT FOR PARKING ONSITE WITH YOUR PARKING HANGTAG READY.
 - If you need to leave the parking lot / the venue to return at a later time, you MUST keep your Red Parking Hang Tag displayed at all times.
 - Your Media Badge MUST be worn at all times for access to the event and campgrounds. We will not provide replacements.

MEDIA PASSHOLDER ARRIVAL MAP (ON-SITE PARKING ONLY - NO CAMPING)



MEDIA ROOM

- Media Passholders will have exclusive access to the Media Room. This room may be utilized for content production.
- Lunch will be provided on both Friday and Saturday from 11:30 AM - 1:30 PM in the Media Room.
- MUST present your Media credentials for lunch and Media Room access.
- A Media concierge will be available if any assistance is needed.
- The Media Room is located within the Commercial Building. The Commercial building can be accessed upon entering through the front main event entrance nearby shuttle drop off / pick up.
- The Overland Expo WEST Media Room Sponsors are as follows:
 - [TRAVOCA](#) (Friday: 11:30 AM - 1:30 PM)
 - [ROA Off-Road](#) (Saturday: 11:30 AM - 1:30 PM)

REMINDERS

- All campsites are on a first-come, first-serve basis. If camping with another party, then they must carry the same pass type as you and arrive at the same time to be placed next to one another. NO saving space in the campgrounds for others. Please be understanding during camping placement, as Staff will assist all campers in the designated spaces. It is festival-style camping: you will be close to your neighbor.
- Only Overland style campers are allowed. If exceeding 13' please [CONTACT US](#).

[Kakadu](#) will be our event shower provider, available for Camping passholders. **Kakadu Shower Hours:** 6:30 AM - 9:30 AM and 6:00 PM – 9:00 PM

- Be sure to fill your water tanks prior to arrival, as potable water will be limited to filling water bottles **only**.
- Backpacks are permitted to bring necessities.
- Quiet hours begin at 10 PM each evening, please be respectful of your neighbor.
- If ADA camping accommodations have been requested, please present your ADA placard and a Camp Host will place you accordingly.
- Smoking (this includes e-cigarettes and vapes) is allowed in designated areas only.
- Well-behaved and leashed dogs are welcome at Overland Expo.
- ONLY Propane fires with an on & off switch are allowed at the event
- Overland Expo will follow all State and Local fire restrictions as required at the time of the event. This could prohibit use of all propane fire pits or cooking units.
- ONLY Propane fires with an on & off switch are allowed.
- Check out for the General Campgrounds is 11 AM on Monday, May 19, 2025

PLAN AHEAD

- Download the [Official Overland Expo App](#). Choose the 2025 WEST Event. Log in with your unique email used within your ticket registration. The app will provide a venue map that will guide you to exhibitors, food vendors, and the general class schedule. Create your account PRIOR to arriving at the event.
- Check out our general [FAQ](#) for more information on campground amenities, rules, kids, dogs, media usage, vehicle restrictions, and MORE!
- For event specifics, check out our [WEST FAQ](#).
- Please review [SHOW UPDATES](#) for the newest map, schedules, exhibitor lists, and final announcements.
- Interested in upgrading your pass? In need of adding on additional passengers or merchandise to your order. [CONTACT US](#) for further assistance!

Your Media Credential Details:

Media Pass provides the below access for one (1) Adult and one (1) Vehicle including:

- Media Weekend Pass admission to Overland Expo West May 16-18, 2025;
- Plus, enjoy 120+ general activities: demos, roundtables, slideshows, and evening films;
- Shop the exhibitor midway & food vendors;
- First drink free at Welcome Reception and Happy Hours;
- Badge, Goody bag + Sourcebook Magazine
- Exclusive access to the Media Room for lunch and content production.
- Complimentary Lunch (Friday & Saturday | 11:30 AM - 1:30 PM)

Austin Caron: Big Fish Collective | 708-745-1747 | Austin@bfcollective.com

THANK YOU AGAIN FOR JOINING US & CHEERS TO ANOTHER GREAT OVERLAND EXPO WEST!

~ THE OVERLAND EXPO TEAM ~