



Fort Tuthill County Park \\ Flagstaff, AZ \\ May 16-18, 2025

REVEL VAN GROUP CAMP ATTENDEES

THANK YOU FOR CHOOSING OVERLAND EXPO WEST AS YOUR NEXT ADVENTURE!

The entire Overland Expo Team cannot wait to celebrate our 16th West event with you! Please familiarize yourself with these arrival instructions and other valuable information pertaining to your pass type and trip!

**** ON-SITE CHECK-IN LOCATION INFO ****

Check-in on-site at Fort Tuthill County Park in Flagstaff

For your convenience, the venue will be the *check-in location* for all Revel Van Group Camp Attendees this year.

Ft. Tuthill County Park
2446 Fort Tuthill Loop, Flagstaff, AZ 86005

REVEL VAN GROUP CAMP CHECK-IN HOURS:

- Thursday, May 15th (8:00 AM – 6:00 PM)
- Friday, May 16th (8:00 AM – 6:00 PM)
- Saturday, May 17th (8:00 AM – 5:00 PM)

YOU MUST ARRIVE WITHIN THE DESIGNATED CHECK-IN HOURS-NO EXCEPTIONS!

REVEL VAN GROUP CAMP ATTENDEE GATE HOURS:

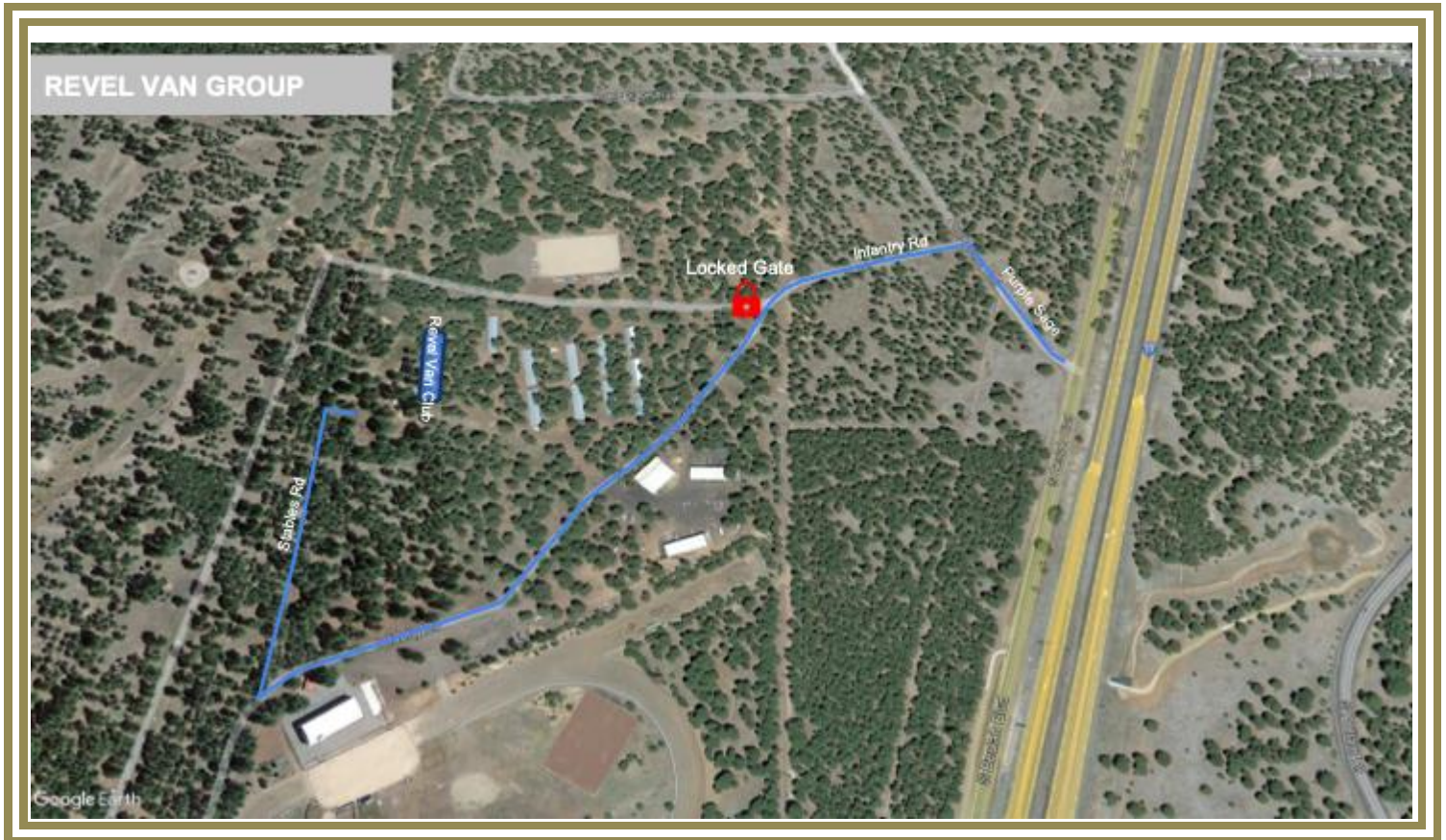
- Friday, May 16th (8:00 AM – 5:00 PM)
- Saturday, May 17th (8:00 AM – 5:00 PM)
- Sunday, May 18th (9:00 AM – 3:00 PM)

ARRIVAL

- Your QR code is your ticket! Please have your QR code (print / digital) ready for a smooth check-in process.
- Please REVIEW and SIGN the general liability waiver located in your ticket confirmation email; this is required before your arrival onsite.
- For a quick staging process, follow the set of directions below:
 - FROM S. BEULAH BLVD / 89A, TURN ONTO PURPLE SAGE TRAIL.
 - FROM PURPLE SAGE, TURN LEFT ONTO INFANTRY RD & FOLLOW DIRECTIONAL SIGNAGE TO WEEKEND PASS WITH CAMPING CHECK-IN
 - Do **NOT** enter at the main Fort Tuthill County Park entrance
- Upon entering the path, proceed to the staging lanes. Overland Expo Staff will verify your Revel Van Group Camp Registration, scan your QR code, issue your REQUIRED credentials for the weekend (Camping Hang Tag & Wristband), and then guide you to your campsite.

- If you need to leave your campsite/venue to return at a later time, you **MUST** keep your Camping Hang Tag displayed at all times.
- Your wristband **MUST** be worn at all times for access to the campgrounds and event. We will not provide replacements.

REVEL VAN GROUP CAMP ARRIVAL MAP



REMINDERS

- All campsites are on a first-come, first-serve basis. If camping with another party, then they must carry the same pass type as you and arrive at the same time to be placed next to one another. NO saving space in the campgrounds for others. Please be understanding during camping placement, as Staff will assist all campers in the designated spaces. It is festival-style camping: you will be close to your neighbor.
- Only Overland style campers are allowed. If exceeding 13' please [CONTACT US](#).
- [Kakadu](#) will be our event shower provider, available for Camping passholders. **Kakadu Shower Hours:** 6:30 AM - 9:30 AM and 6:00 PM – 9:00 PM
- Be sure to fill your water tanks prior to arrival, as potable water will be limited to filling water bottles **only**.
- Backpacks are permitted to bring necessities.
- Quiet hours begin at 10 PM each evening, please be respectful of your neighbor.
- If ADA camping accommodations have been requested, please notify us at check in.
- Smoking (this includes e-cigarettes and vapes) is allowed in designated areas only.
- Well-behaved and leashed dogs are welcome at Overland Expo. Please clean up after your pet.

- ONLY Propane fires with an on & off switch are allowed at the event
- Overland Expo will follow all State and Local fire restrictions as required at the time of the event. This could prohibit use of all propane fire pits or cooking units.
- Check out for the General Campgrounds is 11 AM on Monday, May 19, 2025

PLAN AHEAD

- Download the [Official Overland Expo App](#). Choose the 2025 WEST Event. Log in with your unique email used within your ticket registration. The app will provide a venue map that will guide you to exhibitors, food vendors, and the general class schedule. Create your account PRIOR to arriving at the event.
- Check out our general [FAQ](#) for more information on campground amenities, rules, kids, dogs, media usage, vehicle restrictions, and MORE!
- For event specifics, check out our [WEST FAQ](#).
- Please review our [SHOW UPDATES](#) for the newest map, schedules, exhibitor lists, and final announcements.
- Interested in upgrading your pass? In need of adding on additional passengers or merchandise to your order. [CONTACT US](#) for further assistance!

Revel Van Group Camp Credential Details:

The Weekend Pass with Camping package provides the below access for one (1) Adult and one (1) Vehicle including:

- Weekend Pass admission to Overland Expo West May 16-18, 2025;
- Plus, enjoy 120+ general activities: demos, roundtables, slideshows, and evening films;
- Shop the exhibitor midway & food vendors;
- Sourcebook Magazine

THANK YOU AGAIN FOR JOINING US & CHEERS TO ANOTHER GREAT OVERLAND EXPO WEST!
~ THE OVERLAND EXPO TEAM ~