



**The Ranch | Loveland, CO | August 22-24, 2025**

## **SHOWCASE & DIY PASSHOLDERS**

**THANK YOU FOR CHOOSING OVERLAND EXPO MOUNTAIN WEST AS YOUR NEXT ADVENTURE!**

The entire Overland Expo Team cannot wait to celebrate another Mountain West event with you! Please familiarize yourself with these arrival instructions and other valuable information pertaining to your pass type and trip!

---

### **\*ON-SITE VENUE CHECK-IN LOCATION\***

**The Ranch  
5280 Arena Cir. Loveland, CO 80538**

---

### **SHOWCASE & DIY CHECK-IN HOURS:**

- Thursday, August 21st (10:00 AM – 3:00 PM)
- Attend the mandatory Showcase & DIY / Creator Area Meeting on Thursday at 3:30pm in the Storytelling Pavilion.

**YOU MUST ARRIVE WITHIN THE DESIGNATED CHECK-IN HOURS-NO EXCEPTIONS!**

### **SHOW HOURS:**

- Friday, August 22nd (8:00 AM – 5:00 PM)
- Saturday, August 23rd (8:00 AM – 5:00 PM)
- Sunday, August 24th (9:00 AM – 3:00 PM)

---

## **ARRIVAL**

- Upon arrival at **The Ranch**, proceed to the Camping Check-in Tent that will take place in the 4H parking lot, located behind the McKee Building. [Click Here for Map Directions](#)
- Your QR code is your ticket! Please have your QR code (print / digital) ready for check-in.
- Please REVIEW and SIGN the general liability waiver located in your ticket confirmation email; this is required before your arrival onsite.
- Once you've received your credentials (Camping Hang Tag & Showcase / DIY Badge), text message Azure so she can meet you and lead you to your spot in the Showcase & DIY Area.

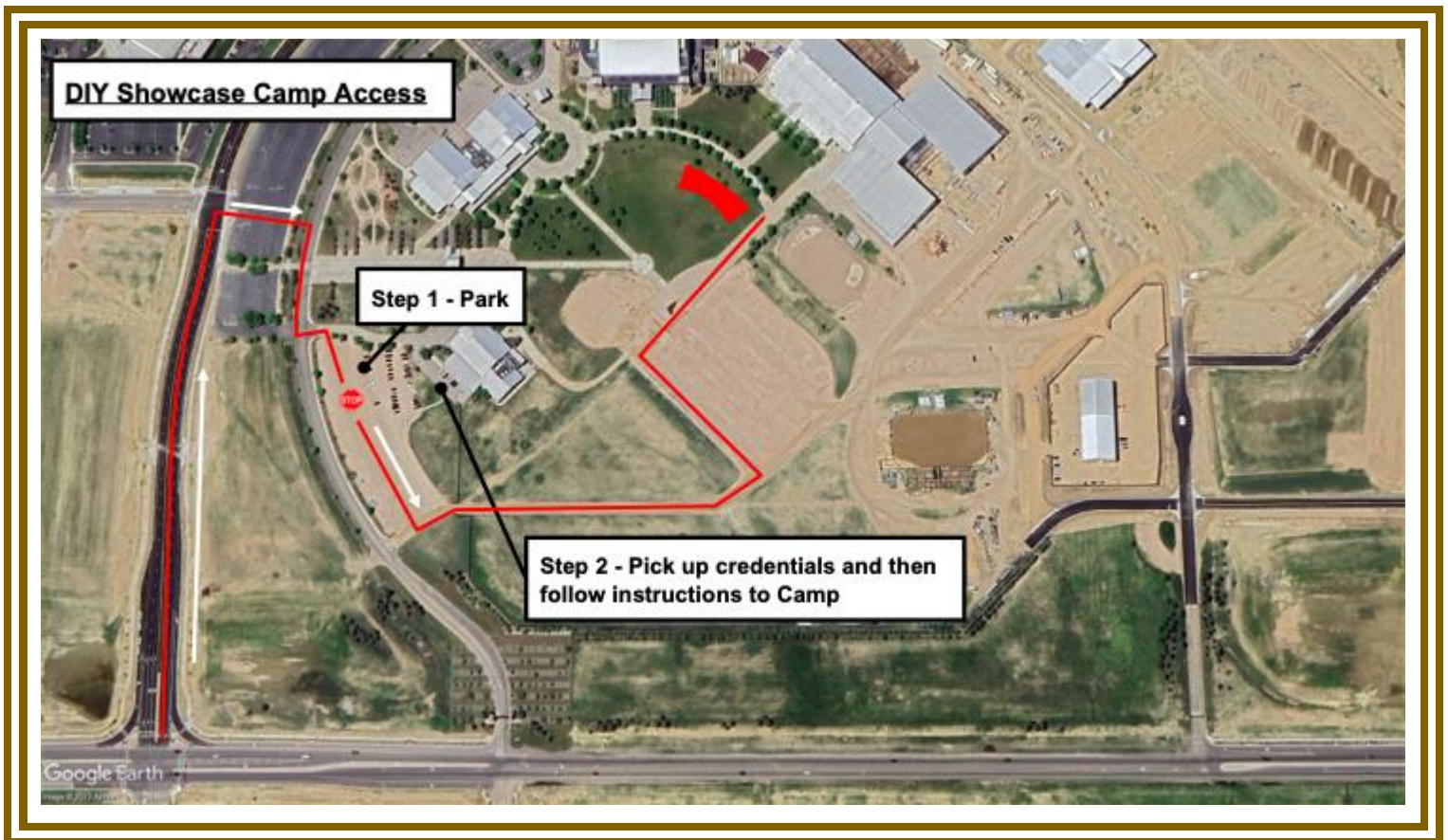
---

**RIDER JUSTICE MOTO DINNER PARTY: FRIDAY 7PM | \$55 / PERSON | DINNER-DRINKS-RAFFLE |  
ADD ON A MOTO DINNER PARTY TICKET TODAY!**

## ARRIVAL

- Upon arrival at **The Ranch**, proceed to the Showcase & DIY Check-in that will take place in the overflow parking lot.
- Your QR code is your ticket! Please have your QR code (print / digital) ready for check-in.
- Please REVIEW and SIGN the general liability waiver located in your ticket confirmation email; this is required before your arrival onsite.
- Once you've received your credentials (Vehicle Hang Tag & Showcase / DIY Badge), then you will **call / text Azure at** so that Azure will be available to place you in your campsite location.
  - Once your vehicle has been placed in the Showcase & DIY Area (which must happen by 3:30pm on Thursday), you are not to move your vehicle until you have been given the "all clear" by a member of the Overland Expo Staff, not before 3:30pm on Sunday.
  - Your DIY / Showcase Badge MUST be worn at all times for access to the campgrounds and the event. We will not provide replacements.

### SHOWCASE / DIY PASSHOLDER ARRIVAL MAP - ON-SITE CAMPING



### ON-SITE SHOWCASE & DIY ARRIVAL - CAMPING:

- Follow this set of directions below for ONSITE EVENT CAMPING:
- **Enter off of N Fairgrounds Ave, turn onto Arena Circle.**
- From Arena Circle, follow signage / traffic personnel to the assigned entry gate & parking location
- Upon entering the venue, Overland Expo Staff and signage will direct you to the Camping Check-In at the 4H parking lot, located behind the McKee Building.
- Once you have parked, proceed to the check-in tent and your Showcase / DIY Pass will be scanned.
- You will receive a swag bag, show materials, such as our Overland Expo Visitor's Guide, which includes an event map and daily schedules.
- After receiving your credentials at check-in, Azure will be available to place you in your campsite location.

## REMINDERS

- Your campsite for the Showcase & DIY Area will be assigned by Azure and you will be placed in that spot upon your arrival. The Showcase & DIY Area is ONLY for approved Showcase & DIY attendees – do NOT invite others to camp with you here.
  - It is festival-style camping: you will be close to your neighbor.
  - [Kakadu](#) will be our event shower provider, available for Camping passholders.
    - **Kakadu Shower Hours:** 6:30 AM - 9:30 AM and 6:00 PM – 9:00 PM
  - Be sure to fill your water tanks prior to arrival, as potable water will be limited to filling water bottles **only**.
  - Backpacks are permitted to bring necessities.
  - Sunscreen is HIGHLY recommended for this time of the year. Please bring with you!
  - Quiet hours begin at 10 PM each evening, please be respectful of your neighbor.
  - Smoking (this includes e-cigarettes and vapes) is allowed in designated areas only.
  - Well-behaved and leashed dogs are welcome at Overland Expo.
  - ONLY Propane fires with an on & off switch are allowed.
  - Overland Expo will follow all State and Local fire restrictions as required at the time of the event. This could prohibit use of all propane fire pits or cooking units.
  - Showcase / DIY move out will begin Sunday, August 24, 2025 no earlier than 3:30pm and you must wait until a staff person has given you the “all clear” to move your vehicle (we must wait until all attendees have cleared the venue); check out for the venue is 11 AM on Monday, August 25, 2025.
  - You are camping in a liquor control area, please keep all alcohol inside of your camper. Do not distribute alcohol to the general public.
- 

## PLAN AHEAD

- Download the [Official Overland Expo App](#). Confirm you are entering the 2025 MOUNTAIN WEST Event. Log in with your unique email used within your Showcase & DIY registration. The app will provide a venue map that will guide you to exhibitors, food vendors, and the general class schedule. Create your account PRIOR to arriving at the event.
    - If this is a different email than you usually use to correspond with Azure, **PLEASE LET HER KNOW** -again, so you are able to accurately access your schedule.
  - Check out our general [FAQ](#) for more information on campground amenities, rules, kids, dogs, media usage, vehicle restrictions, and MORE!
  - For event specifics, check out our [MTN WEST FAQ](#).
  - Please review our [SHOW UPDATES](#) for the newest map, schedules, exhibitor lists, and final announcements.
  - **REVIEW** your teaching schedule in the app and assigned times and class location. All times and locations are confirmed and cannot be changed.
  - **MAKE note of your schedule, but do not select your classes or any other classes in the app** — space is limited and this takes space away from paying attendees.
  - **REVIEW** the maps and class location in the app AND NOTE where your classes are held.
  - Review the [Instructor / Presenter Schedule Guide](#). Be prepared with all of your supplies needed for your presentation.
    - In need of adding on additional passengers, merchandise or raffle tickets to your order?  
[CONTACT US](#) for further assistance!
- 

### Your Showcase/DIY Details:

The Showcase / DIY Camping Package provides the below access for one (1) Adult and one (1) Vehicle including:

- General Weekend Pass admission to Overland Expo Mountain West August 22-24, 2025 (all days – Fri-Sun);
- The Ranch Special campsite within the exhibitor row Thurs – Mon;
- Enjoy 120+ general activities: demos, roundtables, and slideshows;
- Shop the exhibitor midway;
- Entrance to event after parties;

- First drink free at Welcome Reception and Happy Hours (Thurs-Sat);
- Swag Bag, Credentials, Overland Expo Visitor's Guide + Sourcebook Magazine

**Azure O'Neil:** [azure.oneil@overlandexpo.com](mailto:azure.oneil@overlandexpo.com)

**THANK YOU AGAIN FOR JOINING US & CHEERS TO ANOTHER GREAT OVERLAND EXPO MOUNTAIN  
WEST!**

**~ THE OVERLAND EXPO TEAM ~**