



**The Ranch | Loveland, CO | August 22-24, 2025**

**WEEKEND PASS WITH CAMPING ATTENDEES**

**THANK YOU FOR CHOOSING OVERLAND EXPO MOUNTAIN WEST AS YOUR NEXT ADVENTURE!**

The entire Overland Expo Team cannot wait to celebrate another Mountain West event with you! Please familiarize yourself with these arrival instructions and other valuable information pertaining to your pass type and trip!

---

**\*CHECK IN ON-SITE AT THE VENUE\***

**The Ranch**

**5280 Arena Cir. Loveland, CO 80538**

---

**CAMPING CHECK-IN HOURS:**

- Thursday, August 21<sup>st</sup> (8:00 AM – 6:00 PM)
- Friday, August 22<sup>nd</sup> (8:00 AM – 6:00 PM)
- Saturday, August 23<sup>rd</sup> (8:00 AM – 4:00 PM)

**YOU MUST ARRIVE WITHIN THE DESIGNATED CHECK-IN HOURS-NO EXCEPTIONS!**

**If you arrive after the above hours, you can camp in the check-in lot until we open the next morning!**

**SHOW HOURS:**

- Friday, August 22<sup>nd</sup> (8:00 AM – 5:00 PM)
- Saturday, August 23<sup>rd</sup> (8:00 AM – 5:00 PM)
- Sunday, August 24<sup>th</sup> (9:00 AM – 3:00 PM)

---

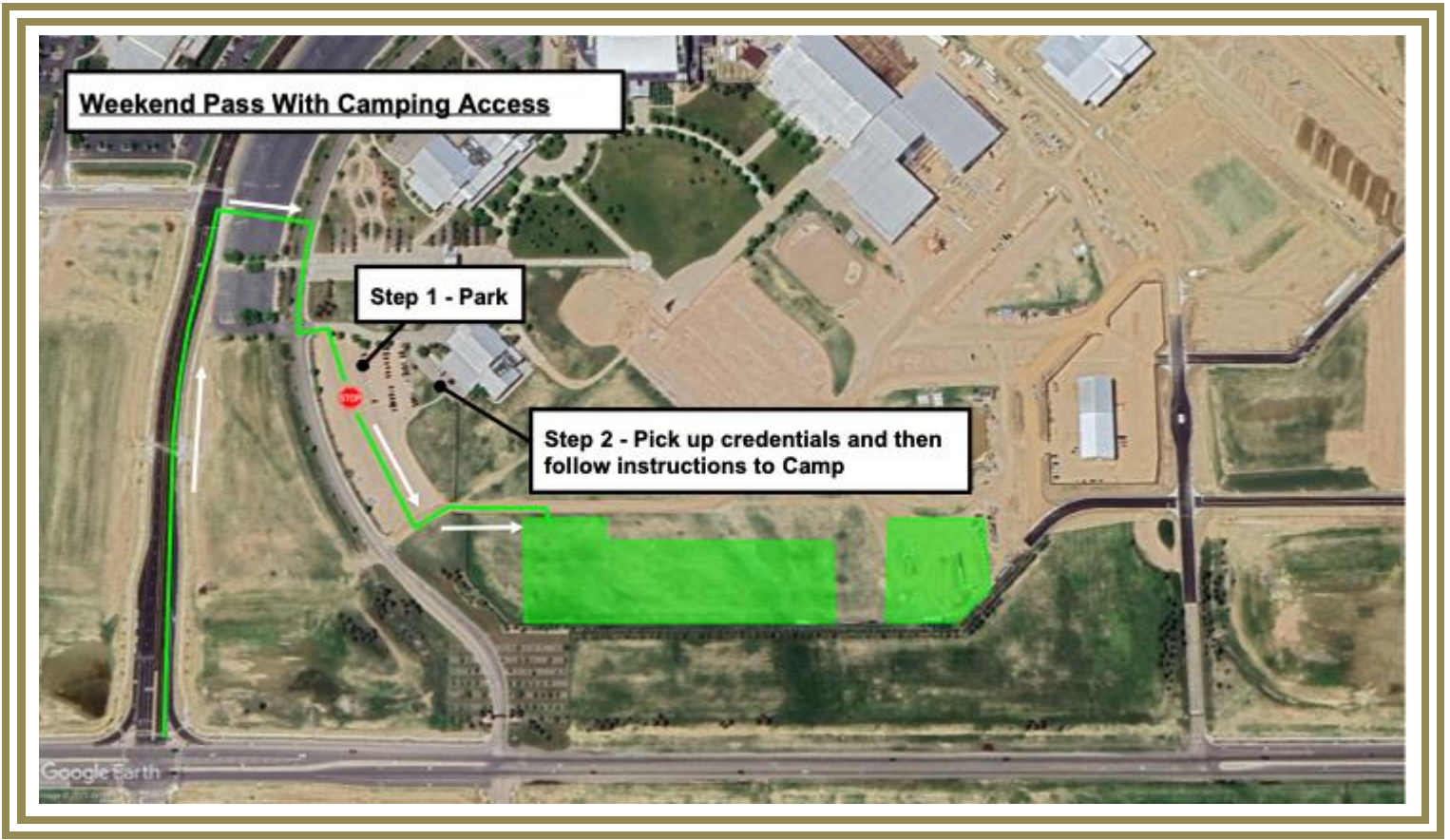
**ARRIVAL**

- Upon arrival at **The Ranch**, proceed to the Camping Check-in Tent that will take place in the 4H parking lot, located behind the McKee Building. [Click Here for Map Directions](#)
- Your QR code is your ticket! Please have your QR code (print / digital) ready for check-in.
- Please REVIEW and SIGN the general liability waiver located in your ticket confirmation email; this is required before your arrival onsite.
- Once you've received your credentials (Camping Hang Tag & Wristband), then you will proceed to the campgrounds.

---

**RIDER JUSTICE MOTO DINNER PARTY: FRIDAY 7PM | \$55 / PERSON | DINNER-DRINKS-RAFFLE |  
ADD ON A MOTO DINNER PARTY TICKET TODAY!**

## GENERAL VEHICLE WEEKEND PASS WITH CAMPING ARRIVAL MAP



### GENERAL WEEKEND PASS WITH CAMPING:

- Follow this set of directions below for WEEKEND PASS WITH CAMPING:
  - **Enter off N Fairgrounds Ave, turn onto Arena Circle.**
  - From Arena Circle, follow signage / traffic personnel to the assigned entry gate & parking location
- Upon entering the venue, Overland Expo Staff and signage will direct you to the Camping Check-In at the 4H Parking Lot, located behind the McKee Building.
  - Once you have parked, proceed to the check-in tent and your General Weekend Pass with Camping ticket will be scanned.
  - You will receive show materials, such as our Overland Expo Visitor's Guide, which includes an event map and daily schedules.
- After receiving your credentials at check-in, the Camping hosts will be available to place you in your campsite location.
  - If you need to leave your campsite / the venue to return at a later time, you **MUST** keep your Camping Hang Tag displayed at all times.
  - Gate 7 will be a 24 hour gate. You **MUST** have credentials to access this gate.
  - Your Credentials **MUST** be worn at all times for access to the event and campgrounds. We will not provide replacements.

---

### REMINDERS

- All campsites are on a first-come, first-serve basis. If camping with another party, then they must carry the same pass type as you and arrive at the same time to be placed next to one another. NO saving space in the campgrounds for others. Please be understanding during camping placement, as Staff will assist all campers in the designated spaces. It is festival-style camping: you will be close to your neighbor.
- Only Overland style campers are allowed. If exceeding 13' please [CONTACT US](#).

- [Kakadu](#) will be our event shower provider, available for Camping passholders.
  - Kakadu Shower Hours: 6:30 AM - 9:30 AM and 6:00 PM – 9:00 PM
  - Showers will be available starting Thursday evening thru Sunday morning!
- Be sure to fill your water tanks prior to arrival, as potable water will be limited to filling water bottles **only**.
- Backpacks are permitted to bring necessities.
- Sunscreen is HIGHLY recommended for this time of the year. Please bring with you!
- Quiet hours begin at 10 PM each evening, please be respectful of your neighbor.
- If ADA camping accommodations have been requested, please present your ADA placard and a Camp Host will place you accordingly.
- Smoking (this includes e-cigarettes and vapes) is allowed in designated areas only.
- Well-behaved and leashed dogs are welcome at Overland Expo.
- Children Ages 14 and under are **FREE** with an adult admission and do not require a ticket.
- ONLY Propane fires with an on & off switch are allowed.
  - Overland Expo will follow all State and Local fire restrictions as required at the time of the event. This could prohibit use of all propane fire pits or cooking units.
- Check out for all Campgrounds is 11 AM on Monday, August 25, 2025

---

## PLAN AHEAD

- Download the [Official Overland Expo App](#). Confirm you are entering the 2025 MOUNTAIN WEST Event. Log in with your unique email used within your ticket registration. The app will provide a venue map that will guide you to exhibitors, food vendors, and the general class schedule. Create your account PRIOR to arriving at the event.
- Check out our general [FAQ](#) for more information on campground amenities, rules, kids, dogs, media usage, vehicle restrictions, and MORE!
- For event specifics, check out our [MTN WEST FAQ](#).
- Please review our [SHOW UPDATES](#) for the newest map, schedules, exhibitor lists, and final announcements.
- Interested in upgrading your pass? In need of adding on additional passengers or merchandise to your order?
  - [CONTACT US](#) for further assistance!

---

## Your General Weekend Pass with Camping Details:

The General Weekend Pass With Camping Package provides the below access for one (1) Adult and one (1) Vehicle including:

- General Weekend Pass admission to Overland Expo Mountain West August 22-24, 2025;
- The Ranch General on-site campsite Thurs – Mon;
- Plus, enjoy 120+ general activities: demos, roundtables, and slideshows;
- Shop the exhibitor midway;
- Credentials, Overland Expo Visitor's Guide + Sourcebook Magazine

---

**THANK YOU AGAIN FOR JOINING US &  
CHEERS TO ANOTHER GREAT OVERLAND EXPO MOUNTAIN WEST!  
~ THE OVERLAND EXPO TEAM ~**