



**OVERLAND**  
**EXPO** WEST 2026

**MAY 15-17, 2026**

FT. TUTHILL COUNTY PARK  
FLAGSTAFF, AZ

## ARRIVAL INSTRUCTIONS

**Fort Tuthill County Park \\ Flagstaff, AZ \\ May 15-17, 2026**

## MEDIA PASSHOLDERS

**THANK YOU FOR CHOOSING OVERLAND EXPO WEST AS YOUR NEXT ADVENTURE!**

The entire Overland Expo Team cannot wait to celebrate our 17<sup>th</sup> West event with you! Please familiarize yourself with these arrival instructions and other valuable information pertaining to your pass type and trip.

### **\*\* ON-SITE CHECK-IN LOCATION INFO \*\***

#### **Check-in on-site at Fort Tuthill County Park in Flagstaff**

For your convenience, the venue will be the *check-in location* for all Media Passholders this year.

**Ft. Tuthill County Park**

[W Purple Sage Trail, Flagstaff, AZ 86005](#)

(Click the address for a dropped pin and map directions)

#### **MEDIA CHECK-IN HOURS:**

- Thursday, May 14th (8:00 AM – 6:00 PM)
- Friday, May 15th (8:30 AM – 6:00 PM)
- Saturday, May 16th (8:30 AM – 5:00 PM)

**YOU MUST ARRIVE WITHIN THE DESIGNATED CHECK-IN HOURS-NO EXCEPTIONS!**

#### **SHOW HOURS:**

- Friday, May 15th **(9:00 AM – 5:00 PM) NEW HOURS**
- Saturday, May 16th **(9:00 AM – 5:00 PM) NEW HOURS**
- Sunday, May 17th (9:00 AM – 3:00 PM)

## ARRIVAL

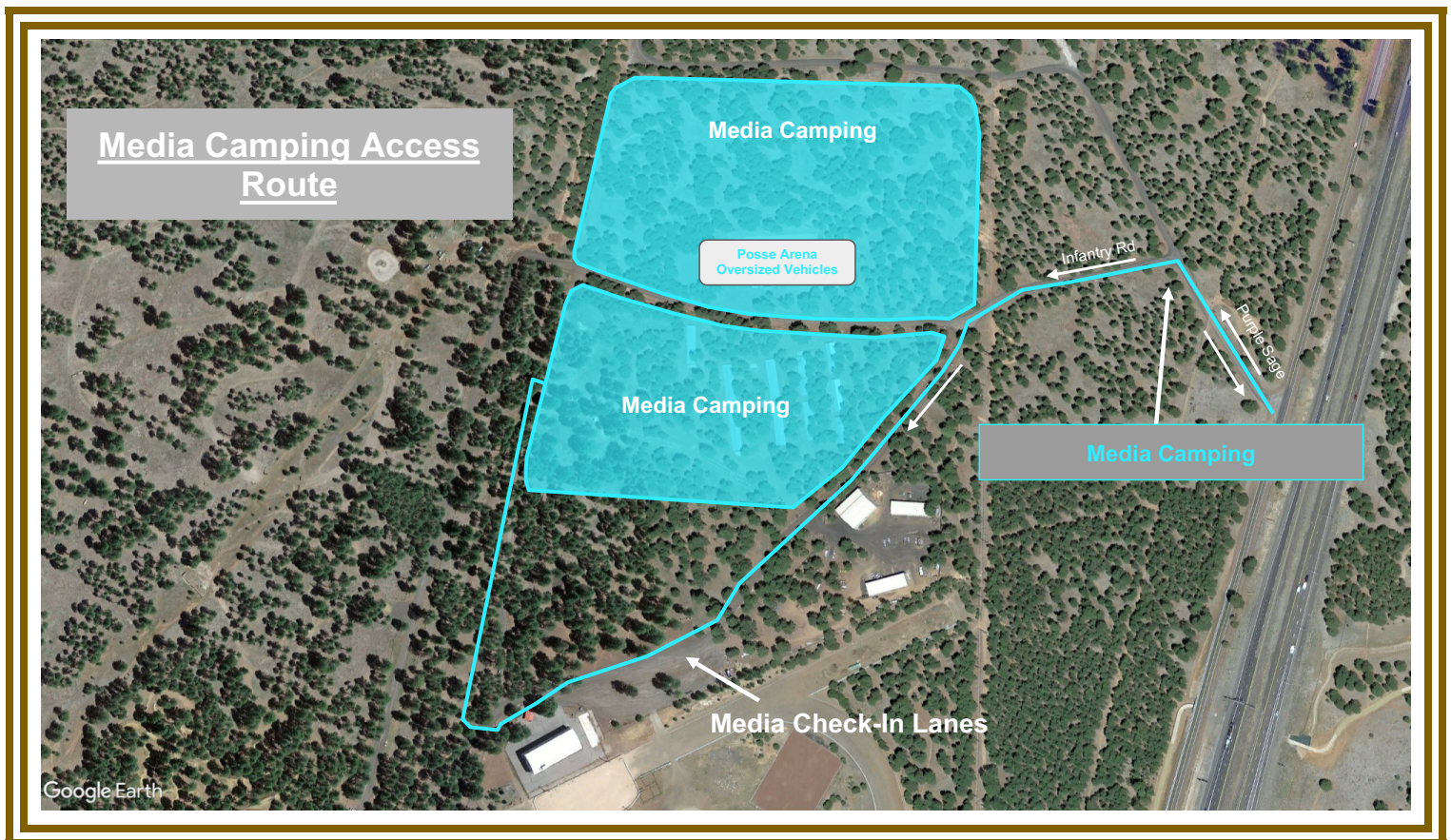
- Your QR code is your ticket! Have your QR code (print / digital) ready for check-in.
- Please REVIEW and SIGN the general liability waiver located in your ticket confirmation email; this is required before your arrival onsite.
- For a quick staging process, follow the set of directions below:
  - FROM S. BEULAH BLVD / 89A, TURN ONTO PURPLE SAGE TRAIL.
  - FROM PURPLE SAGE, TURN LEFT ONTO INFANTRY RD & FOLLOW DIRECTIONAL SIGNAGE TO WEEKEND PASS WITH CAMPING CHECK-IN
- Do **NOT** enter at the main Fort Tuthill County Park entrance
- Upon entering the path, proceed to the staging lanes. Overland Expo Staff will verify your Media Registration, scan your QR code, and issue your **REQUIRED** credentials.
- You have the option of camping onsite within the Instructor Campgrounds or staying offsite and parking in the White Lot on-site parking. Inform the check-in staff of what you would like to do, so they may issue you the appropriate credentials.

- Once you've received your credentials (Camping Hang Tag or White Lot parking lot pass & Media Badge)
- If choosing to camp, you will proceed to set up within the Media Campgrounds.

### ON-SITE MEDIA - CAMPING:

- Follow this set of directions below for ONSITE EVENT CAMPING:
  - FROM S. BEULAH BLVD / 89A, TURN ONTO PURPLE SAGE TRAIL.
  - FROM PURPLE SAGE, TURN LEFT ONTO INFANTRY RD & FOLLOW DIRECTIONAL SIGNAGE TO THE GENERAL WEEKEND PASS WITH CAMPING PLACEMENT WITH YOUR HANG TAG READY.
  - Do **NOT** enter at the main Fort Tuthill County Park entrance
- Upon entering the venue, the Camping hosts will be available to place you in your campsite location.
  - If you need to leave your campsite / the venue to return at a later time, you **MUST** keep your Camping Hang Tag displayed at all times.
  - Your Media Badge **MUST** be worn at all times for access to the event and campgrounds. We will not provide replacements.

### MEDIA PASSHOLDER ARRIVAL MAP (ON-SITE CAMPING)



### OFF-SITE MEDIA – NO CAMPING:

- Follow this set of directions below for PARKING ONSITE:
  - FROM S. BEULAH BLVD / 89A, ENTER AT THE MAIN FORT TUTHILL COUNTY PARK ENTRANCE.
  - FOLLOW THE ONE-WAY PATTERN UNTIL YOU RUN INTO THE FORK IN THE ROAD. KEEP RIGHT.
  - PROCEED TO THE WHITE LOT FOR PARKING ONSITE WITH YOUR PARKING HANGTAG READY.

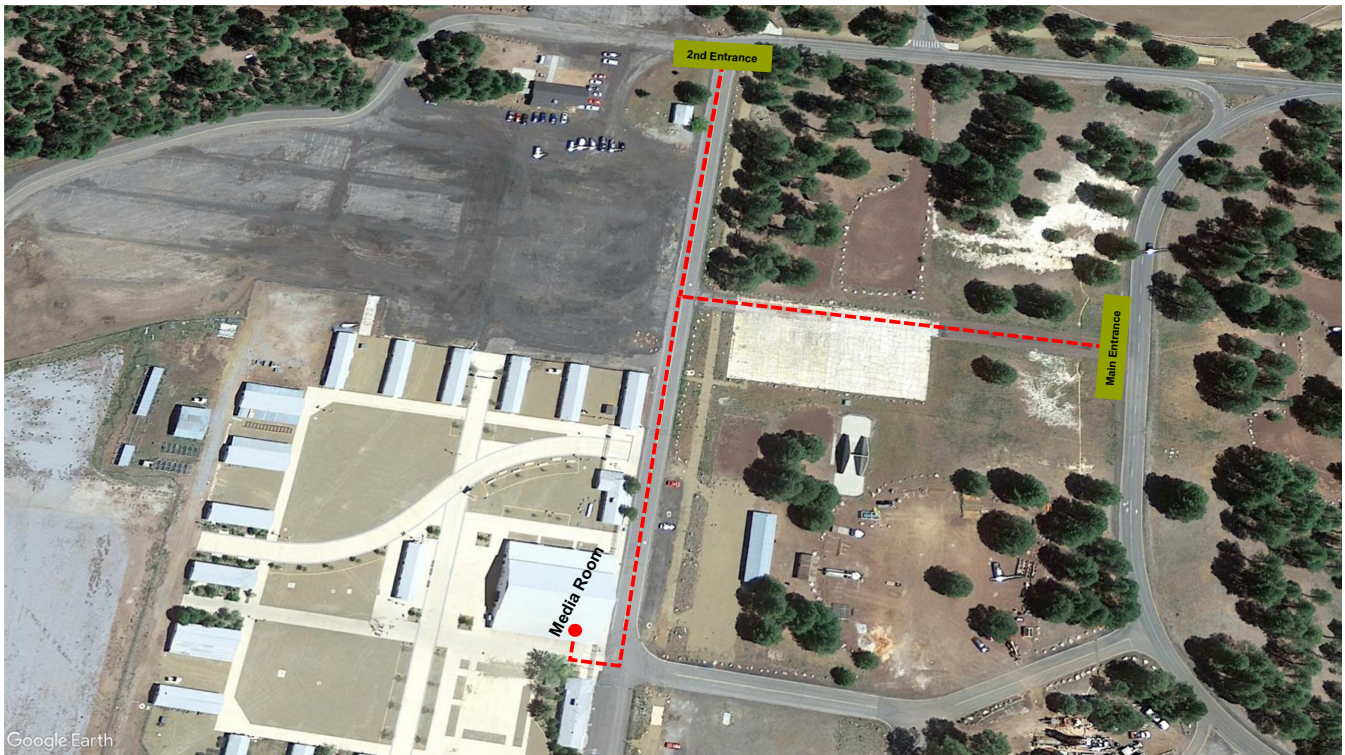
- If you need to leave the parking lot / the venue to return at a later time, you MUST keep your WHITE Parking Hang Tag displayed at all times.
- Your Media Badge MUST be worn at all times for access to the event and campgrounds. We will not provide replacements.

### MEDIA PASSHOLDER ARRIVAL MAP (ON-SITE PARKING ONLY - NO CAMPING)



### MEDIA ROOM

- Media Passholders will have exclusive access to the Media Room. This room may be utilized for content production.
- **Wifi is available in the media room all weekend long**
- Light snacks will be provided on both Friday and Saturday from 11:30 AM - 1:30 PM in the Media Room.
- Coffee is available each morning in the media room
- MUST present your Media credentials for lunch and Media Room access.
- The Media Room is located within the Commercial Building. See Map Below.
- The Overland Expo WEST Media Room Sponsors are as follows:
  - [Mohab](#) (Friday: 11:30 AM - 1:30 PM)
  - [OGO Composting Toilet](#) (Saturday: 11:30 AM - 1:30 PM)



## REMINDERS

- All campsites are on a first-come, first-serve basis. If camping with another party, then they must carry the same pass type as you and arrive at the same time to be placed next to one another. NO saving space in the campgrounds for others. Please be understanding during camping placement, as Staff will assist all campers in the designated spaces. It is festival-style camping: you will be close to your neighbor.
- Only Overland style campers are allowed. If exceeding 13' please [CONTACT US](#).
- No Class A or Class C Motorhomes are permitted.
- Event showers will be provided, available for Camping passholders.
  - **Shower Hours:** 6:00 AM - 9:00 AM and 7:00 PM – 10:00 PM
- Be sure to fill your water tanks prior to arrival, as potable water will be limited to filling water bottles **only**.
- Backpacks are permitted to bring necessities.
- Quiet hours begin at 10 PM each evening, please be respectful of your neighbor.
- If ADA camping accommodations have been requested, please present your ADA placard and a Camp Host will place you accordingly.
- Smoking (this includes e-cigarettes and vapes) is allowed in designated areas only.
- Well-behaved and leashed dogs are welcome at Overland Expo.
- ONLY Propane fires with an on & off switch are allowed at the event
  - Overland Expo will follow all State and Local fire restrictions as required at the time of the event. This could prohibit use of all propane fire pits or cooking units.
- Check out for the General Campgrounds is 11 AM on Monday, May 18, 2026

## PLAN AHEAD

- Download the [Official Overland Expo App](#). Choose the 2026 WEST Event. Log in with your unique email used within your ticket registration. The app will provide a venue map that will guide you to exhibitors, food vendors, and the general class schedule. Create your account PRIOR to arriving at the event.
- The Official Overland Expo West Map is also available on OnX Offroad
- Check out our general [FAQ](#) for more information on campground amenities, rules, kids, dogs, media usage, vehicle restrictions, and MORE!
- For event specifics, check out our [WEST FAQ](#).
- Please review [SHOW UPDATES](#) for the newest map, schedules, exhibitor lists, and final announcements.
- Interested in upgrading your pass? In need of adding additional passengers or merchandise to your order. [CONTACT US](#) for further assistance!

---

### Your Media Credential Details:

Media Pass provides the below access for one (1) Adult and one (1) Vehicle including:

- Media Weekend Pass admission to Overland Expo West May 15-17, 2026;
- Plus, enjoy 120+ general activities: demos, roundtables, slideshows, and evening films;
- Shop the exhibitor midway & food vendors;
- First drink free at Welcome Reception and Happy Hours;
- Badge, Goody bag + Sourcebook Magazine
- Exclusive access to the Media Room for snacks and content production.
- Complimentary Light Snacks (Friday & Saturday | 11:30 AM - 1:30 PM)
- Coffee is available each morning in the media room

**Andrew Gutierrez | (949)-226-5711 | [Andrew.Gutierrez@emeraldX.com](mailto:Andrew.Gutierrez@emeraldX.com)**

**THANK YOU AGAIN FOR JOINING US & CHEERS TO ANOTHER GREAT OVERLAND EXPO WEST!**

**~ THE OVERLAND EXPO TEAM ~**