

**OVERLAND
EXPO** WEST 2026

MAY 15-17, 2026

FT. TUTHILL COUNTY PARK
FLAGSTAFF, AZ



ARRIVAL INSTRUCTIONS

Fort Tuthill County Park \\ Flagstaff, AZ \\ May 15-17, 2026

PREMIUM WEEKEND PASS WITH CAMPING ATTENDEES

THANK YOU FOR CHOOSING OVERLAND EXPO WEST AS YOUR NEXT ADVENTURE!

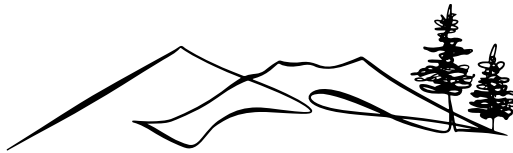
The entire Overland Expo Team cannot wait to celebrate our 17th West event with you! Please familiarize yourself with these arrival instructions and other valuable information pertaining to your pass type and trip!

****OFF-SITE CHECK-IN LOCATION INFO****

Check-in at the Flagstaff Mountain RV & Campground in Flagstaff

For your convenience, we have created an off-site *check-in location* for all Premium Weekend Pass attendees this year. **Before** you arrive at the event venue, you will proceed to check-in and receive your event credentials at the **Flagstaff Mountain RV & Campground** in Flagstaff.

Flagstaff Mountain RV & Campground
1508 Historic Route 66, Flagstaff AZ



**FLAGSTAFF MOUNTAIN
RV & CAMPGROUND**

OFF-SITE PREMIUM CAMPING CHECK-IN HOURS:

- Thursday, May 14th (8:00 AM – 6:00 PM)
- Friday, May 15th (8:30 AM – 6:00 PM)
- Saturday, May 16th (8:30 AM – 5:00 PM)

YOU MUST ARRIVE WITHIN THE DESIGNATED CHECK-IN HOURS-NO EXCEPTIONS!

SHOW HOURS

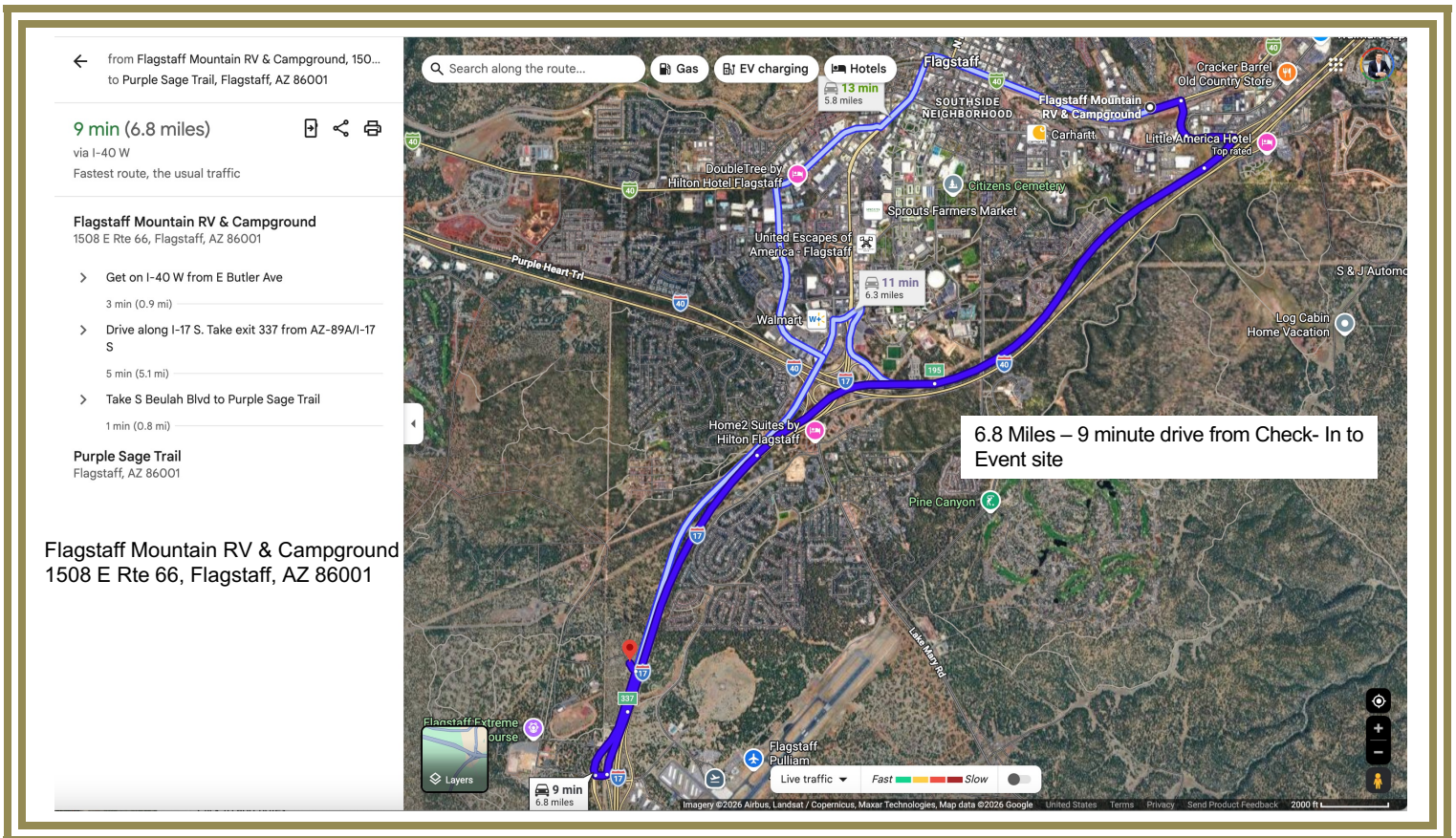
- Friday, May 15th (9:00 AM – 5:00 PM) – **NEW HOURS**
- Saturday, May 16th (9:00 AM – 5:00 PM) – **NEW HOURS**
- Sunday, May 17th (9:00 AM – 3:00 PM)

ARRIVAL

- Upon arrival at the **Flagstaff Mountain RV & Campground** follow directional signage and proceed to the Check-In lanes that will take place outside of the building in the parking lot.
- Your QR code is your ticket! Please have your QR code (print / digital) ready for check-in.
- Please REVIEW and SIGN the general liability waiver located in your ticket confirmation email; this is required before your arrival onsite.
- Once you've received your credentials (Camping Hang Tag & Premium Attendee Badge), then you will head over to the

Overland Expo event site at Fort Tuthill and proceed to the campgrounds.

FLAGSTAFF MOUNTAIN RV & CAMPGROUND ROUTE MAP TO FORT TUTHILL COUNTY PARK



PREMIUM CAMPING:

- Follow this set of directions below for ONSITE EVENT CAMPING:
 - FROM S. BEULAH BLVD / 89A, TURN ONTO PURPLE SAGE TRAIL.
 - FROM PURPLE SAGE FOLLOW THE ROAD AROUND MAKING TWO LEFT HAND TURNS THEN CONTINUE STRAIGHT UNTIL YOU TAKE A RIGHT FOLLOWING DIRECTIONAL SIGNS (TURNING LEFT ON REGIMENT RD) & CAMPING ATTENDANTS TO THE PREMIUM WEEKEND PASS WITH CAMPING AREA. HAVE YOUR HANG TAG READY.
 - **Do NOT enter at the main Fort Tuthill County Park entrance**
- Upon entering the campground, the Camping hosts will be available to place you in your campsite location.
 - If you need to leave your campsite / the venue to return at a later time, you **MUST** keep your Camping Hang Tag displayed at all times.
 - Your Premium Attendee Badge **MUST** be worn at all times for access to the event and campgrounds. We will not provide replacements.

PREMIUM WEEKEND PASS WITH CAMPING ARRIVAL MAP



REMINDERS

- All campsites are on a first-come, first-serve basis. If camping with another party, then they must carry the same pass type as you and arrive at the same time to be placed next to one another. NO saving space in the campgrounds for others. Please be understanding during camping placement, as Staff will assist all campers in the designated spaces. It is festival-style camping: you will be close to your neighbor.
- Only Overland style campers are allowed. If exceeding 13' please [CONTACT US](#).
- No Class A or Class C motorhomes will be allowed
- Event showers will be provided, available for Camping passholders.
 - **Shower Hours:** 6:00 AM - 9:00 AM and 7:00 PM – 10:00 PM
- Be sure to fill your water tanks prior to arrival, as potable water will be limited to filling water bottles **only**.
- Backpacks are permitted to bring necessities.
- Quiet hours begin at 10 PM each evening, please be respectful of your neighbor.
- If ADA camping accommodations have been requested, please present your ADA placard and a Camp Host will place you accordingly.
- Smoking (this includes e-cigarettes and vapes) is allowed in designated areas only.
- Well-behaved and leashed dogs are welcome at Overland Expo.
- ONLY Propane fires with an on & off switch are allowed at the event
- Overland Expo will follow all State and Local fire restrictions as required at the time of the event. This could prohibit use of all propane fire pits or cooking units.
- Check out for the Premium Campgrounds is 11 AM on Monday, May 18, 2026

PREMIUM HOSPITALITY LOUNGE SCHEDULE SPONSORED BY 1UP USA

As part of your Premium Weekend Pass with Camping package, you have access to the Premium Hospitality Lounge. Each day it includes the following:

Thursday, May 14th	5:00pm-7:00pm - HAPPY HOUR
Friday, May 15th	8:00am - COFFEE AND PASTRIES 5:00pm-7:00pm - HAPPY HOUR
Saturday, May 16th	8:00am - COFFEE AND PASTRIES 5:00pm-7:00pm - HAPPY HOUR
Sunday, May 17th	8:00am - COFFEE AND PASTRIES

PLAN AHEAD

- Download the [Official Overland Expo App](#). Choose the 2026 WEST Event. Log in with your unique email used within your ticket registration. The app will provide a venue map that will guide you to exhibitors, food vendors, and the general class schedule. Create your account PRIOR to arriving at the event.
- The official Overland Expo Map is also available OnX Maps just search Overland Expo
- Check out our general [FAQ](#) for more information on campground amenities, rules, kids, dogs, media usage, vehicle restrictions, and MORE!
- For event specifics, check out our [WEST FAQ](#).
- Please review our [SHOW UPDATES](#) for the newest map, schedules, exhibitor lists, and final announcements.
- Interested in upgrading your pass? In need of adding on additional passengers or merchandise to your order. [CONTACT US](#) for further assistance!

Your Premium Weekend Pass with Camping Details:

The Premium Weekend Pass with Camping Package provides the below access for one (1) Adult and one (1) Vehicle including:

- Premium Weekend Pass admission to Overland Expo May West 15-17, 2026.
- Fort Tuthill County Campgrounds Premium on-site upgraded campsite Thurs – Mon;
- Access to the exclusive hospitality lounge sponsored by 1UP USA;
 - Includes happy hour each evening from 5pm-7pm, and coffee with pastries each morning!
- Plus, enjoy 120+ general activities: demos, roundtables, slideshows, and evening films;
- Shop the exhibitor midway;
- First drink free at Welcome Reception and Happy Hours (Thurs, Fri & Sat evenings, 5-7 PM);
- Badge, Goody bag + Sourcebook Magazine

THANK YOU AGAIN FOR JOINING US & CHEERS TO ANOTHER GREAT OVERLAND EXPO WEST!

~ THE OVERLAND EXPO TEAM ~