



OVERLAND
EXPO PNW 2026

JUNE 26-28, 2026

DESCHUTES COUNTY EXPO CENTER
REDMOND, OR

ARRIVAL INSTRUCTIONS

Deschutes County Expo Center | Redmond, OR | June 26-28, 2026

EXHIBITOR

THANK YOU FOR CHOOSING OVERLAND EXPO PACIFIC NORTHWEST AS YOUR NEXT ADVENTURE!

The entire Overland Expo Team cannot wait to celebrate another Pacific Northwest event with you! Please familiarize yourself with these arrival instructions and other valuable information pertaining to your exhibitor's booth space!

Deschutes County Expo Center
3800 S.W. Airport Way | Redmond, OR 97756

NEW SHOW HOURS

- Friday, June 26th (9:00 AM – 5:00 PM) **NEW HOURS**
- Saturday, June 27th (9:00 AM – 5:00 PM) **NEW HOURS**
- Sunday, June 28th (9:00 AM – 3:00 PM)

ARRIVAL INFO

- **STAKING is allowed.** Deschutes County Expo Center does allow staking on grass only. Booth tents on grass may be secured with stakes. Stakes longer than 12 inches must be approved on-site by event management. **Staking is only permitted 5 feet away from any asphalt surface** to protect the facility's irrigation system. Please be sure to review the very important information in regard to the Non-Staking and Tent Policy in the [Exhibitor FAQ](#)
- **BADGES & CAMPING:** Additional exhibitor badges and exhibitor camping passes are available for purchase in the show office on-site.
- **STAY UNTIL SUNDAY- 3 PM.** Companies that pack up and leave before Sunday at 3 pm will not be invited back to future events. Customers purchase tickets for Sunday to see you. Please represent your company and Overland Expo to your best ability.
- **NO MOVING VEHICLES** in and out of Exhibitor area during show hours, and no ATVs, electric bikes / scooters, or other motorized transport allowed in the Exhibitor area as a means of transport except for officially sanctioned reasons. This is for safety, dust, and noise control. All extra vehicles must be in the exhibitor parking lot (see map). **All display vehicles must be in the show before 8:00 AM on Friday, Saturday & Sunday. Any vehicles that arrive after this designated time frame will not be allowed in the show.**
- **MOVE OUT INSTRUCTIONS** will be delivered to your booth on Sunday.
- **ELECTRICITY:** Plan for NO electricity in your exhibit space—bring your own **quiet** generator or solar panels.
- **WIFI:** Exhibitor wifi is NOT available nor guaranteed. Please plan for your OWN backup device / alternative sales system for a smoother checkout plan.

- **SAMPLING:** If you have not already contacted us about being on the sampling list, then you are unable to do so at this time. No exceptions! If sampling without approval, you will receive a county fine, your booth will be shut down, and you will be asked to leave.
- **SHIPPING:** If you plan to ship any pallets / crates to the show, we need to know what deliveries you will be expecting. It is mandatory to fill out this [SHIPPING FORM](#). There will be a \$325 fee imposed per pallet / crate for off-loading and transport needs performed by our staff while onsite for the event.
- **CAMPING:** As always you can camp for free in your booth space. If you need an additional camping space you will need to purchase an Exhibitor Camping Pass for \$80 at this [LINK](#) or at the show office. Exhibitor Camping Fee pertains to each vehicle / trailer, not per person (up to 4 exhibitors per campsite). If your camper is bigger than 13ft you will be placed in trailer parking.
- **PREPARE** for any kind of weather—wind, sun, and / or rain. This is an outdoor event! In previous years, there have been winds. Please bring sandbags / tie downs / etc., if needed. Most days are SUNNY & WARM!
- **REMINDER: Raffle** to benefit the **Overland Expo Foundation Raffle** takes place **Saturday** night, 7:00 - 9:00 pm. There's still time to donate, simply complete the form for our [Foundation Donation](#). This is the perfect opportunity to give your brand an extra boost of exposure in front of a large, live audience.
- **PACK IT IN – PACK IT OUT!** In our efforts to reduce our garbage footprint, this is a friendly reminder to clean up after yourself throughout the entire event (setup, show days, and break down). Please Pack Out what you Packed In. Thank you!



ARRIVAL INSTRUCTIONS:

EXHIBITOR MOVE-IN / SETUP DAYS ONLY

EXHIBITOR MOVE-IN / SETUP HOURS:

Wednesday: Noon - 6:00pm

*Please note: SEMI RIGS Need to arrive by 9am on Wednesday to get placed before we start Move-In at noon.

*If you have a trailer that is part of your booth display, we highly encourage you to arrive and place the trailer in your booth space on Wednesday.

**Beat the rush-Move in on Wednesday!*

Thursday: 8:00 am – 6:00 pm

*All exhibitors need to be moved in by 6:00 pm **(NO EXCEPTIONS!)**

NO FRIDAY MOVE-IN - GATES OPEN TO PUBLIC AT 9 AM FRIDAY

On Wednesday and Thursday, **you will be greeted at the Exhibitor Welcome Tent. Our team will direct you to your booth space. At this time, we can also show you where trailer parking is located.**

Once on-site head to the **Show Office** to pick up badges, parking passes, and camping passes. All exhibitor questions can also be addressed in the show office.

IMPORTANT: Ensure all your staff have badges and parking passes in their possession by Friday morning to enter the show.



EXHIBITOR ENTRANCE

- Use Mt Jefferson Drive NOT the Main Entrance (Mt. Hood) to get to the exhibitor check-in.
Address: Deschutes County Expo Center, 3800 SW Airport Way, Redmond OR 97756
- FOLLOW THE TRAFFIC PATTERN TO EXHIBITOR CHECK-IN
- **NOTE: ENTRANCE AND PARKING ON EVENT DAYS IS THE SAME AS SET-UP DAYS. PLEASE READ BELOW CAREFULLY TO AVOID ANY DELAYS.**

Show Office HOURS:

Wednesday – Noon - 6:00pm
 Thursday - 8:00 am – 7:00 pm
 Friday - 8:00 am – 7:00 pm
 Saturday - 8:00 am – 7:00 pm
 Sunday - 8:00 am – 6:00 pm

ARRIVAL INFO ON SHOW DAYS FOR EXHIBITOR PARKING

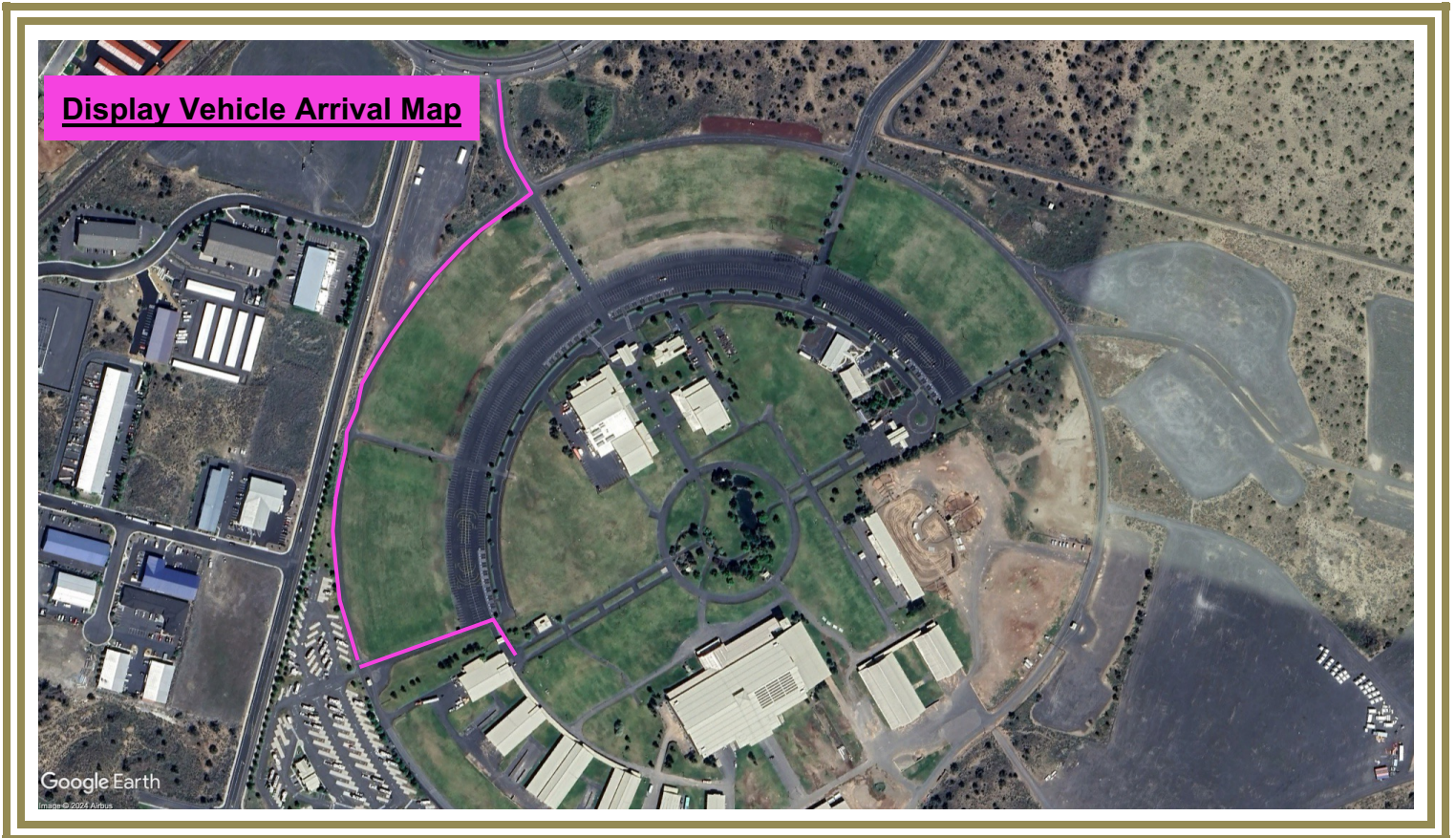
- Park all spare non-booth staff vehicles in the exhibitor parking lot. Make sure all your staff know where to park. Each vehicle **MUST** have a parking pass. **Illegally parked vehicles will be towed.**
- **If in need of storing Exhibitor Trailers, please follow the route map below. Trailers may only be stored within this designated parking lot ONLY.**



DISPLAY VEHICLES:

- **Show Management reserves the right to determine if a display vehicle is approved to be within the booth space.** Display vehicles must be overland centric. No ATVs, rock crawlers, racing SXS, Ultra 4 vehicles, **dune buggys** etc... If you are unsure if your vehicle will be approved, please send us a photo. If you have any questions, contact us.
- Display vehicles are vehicles that are part of a booth display, that fit into the booth dimensions and have been designated with a "Display" hang tag.
- If the vehicle does not go into your display space, it does not come into the show area. All other exhibitor vehicles must be parked in the designated exhibitor parking lot with a parking pass.
- Display Vehicles will be allowed to enter the show area for booth space placement from 7 a.m. – 8 a.m. on Friday, Saturday, & Sunday. No other vehicles are permitted to enter the show gate / area on event days.
- Any display vehicles arriving after this deadline on an event day will only park in the designated exhibitor parking lot.
- Display vehicles are not permitted to leave the show area until one hour AFTER the event has closed to the public for safety reasons.
- It is encouraged to leave any display vehicle in your booth all weekend (instead of driving it back and forth into town/hotel) to avoid issues with getting your display vehicle back in your booth space.

DISPLAY VEHICLES ARRIVAL ROUTE



Only Display vehicles will be allowed into the show area THROUGH the Exhibitor Entrance to their booth spaces between 7:00 AM - 8:00 AM (Friday, Saturday & Sunday) of the show.

DOWNLOAD THE OVERLAND EXPO APP:

- The [Overland Expo Pacific Northwest App](#) is ready for download. Click on the Pacific Northwest, then log in with your unique email address. The app is your guide to exhibitors, venue map, general admission schedule, and more.
- Download the app to your phone BEFORE arriving at the event for best results.
- The Official Overland Expo Map is also available in OnX Offroad

FAQS & PLANNING INFO

- Review the [Exhibitor FAQ: Pacific Northwest](#)
- Visit the [Show Updates](#) web page for the latest map, schedules and exhibitor lists; and read any last-minute announcements.
- Find answers to general questions about kids, dogs, vehicle restrictions, and media usage at our [FAQ](#).
- Find answers to venue and camping questions at our [Pacific Northwest FAQ](#).
- ONLY Propane fires with an on & off switch are allowed at the event
 - Overland Expo will follow all State and Local fire restrictions as required at the time of the event. This could prohibit use of all propane fire pits or cooking units.
- Event showers will be provided, available for Camping passholders. Showers are located in Weekend Pass with Camping and Premium Camping. **Shower Hours:** 6:00 AM - 9:00 AM and 7:00 PM – 10:00 PM

EXHIBITOR CAMPING ROUTE



EVENT HOURS:

- *Friday, June 26th – 9am-5pm *Display vehicles **MUST** be in by 8am
- *Saturday, June 27th – 9am-5pm *Display vehicles **MUST** be in by 8am
- *Sunday, June 28th – 9am-3pm *Display vehicles **MUST** be in by 8am

Exhibitors must be in their booths and ready to go before the event opens. We suggest you arrive no later than 30 minutes before opening but if you have a display vehicle, it must arrive between 7 am - 8 am on Friday, Saturday & Sunday. Gates will be open to exhibitors (with credentials) two hours before the event opens.

QUESTIONS?

Most of the answers to your questions are on our [FAQ: Pacific Northwest](#) If you have questions not covered on that page, please reach out to your sales representative below.

Contact our Overland Expo Sales Team with any questions:

Jacqueline L. Parral-Akins

(818) 470-9201 Cell

jacquie.parral@emeraldx.com

Tim Cromer

+1 (919) 397-8066

Tim.Cromer@overlandexpo.com

Rob Massagli

+1 (940) 220-9525

Rob.Massagli@overlandexpo.com

Heather Scheiffele

Attendee & Client Relations Manager

(714) 880-9406 Business

Heather.scheiffele@emeraldx.com

Shawn Parker

Director of Sales Operations

+1 (310) 408-3119

Shawn.Parker@overlandexpo.com

THANK YOU AGAIN FOR JOINING US & CHEERS TO ANOTHER GREAT OVERLAND EXPO PACIFIC NORTHWEST!

~ THE OVERLAND EXPO TEAM ~